



Assistant – Enterprise

User Guide

Assistant Enterprise (Toolbar) Guide

Copyright Notice

Copyright © 2007 BroadSoft, Inc.

All rights reserved.

Any technical documentation that is made available by BroadSoft, Inc. is proprietary and confidential and is considered the copyrighted work of BroadSoft, Inc.

This publication is for distribution under BroadSoft non-disclosure agreement only. No part of this publication may be duplicated without the express written permission of BroadSoft, Inc. 220 Perry Parkway, Gaithersburg, MD 20877.

BroadSoft reserves the right to make changes without prior notice.

Trademarks

BroadWorks® and BroadWorks Call Center™ Agent/Super are trademarks of BroadSoft, Inc.

Microsoft, MSN, Windows, and the Windows logo are registered trademarks of Microsoft Corporation. Other product names mentioned in this manual may be trademarks or registered trademarks of their respective companies and are hereby acknowledged.

This document is printed in the United States of America.

Table of Contents

1	About This Guide.....	7
1.1	Open BroadWorks Assistant and BroadWorks Assistant – Enterprise	7
1.2	First Time Login	8
1.3	Subsequent Use	11
2	Using Assistant.....	12
2.1	The Toolbar.....	12
2.2	Make a Call	17
2.2.1	Dial Number	17
2.2.2	Dial from Web Page	17
2.2.3	Dial from E-mail	18
2.2.4	Dial from Contact List	18
2.2.5	Dial from vCard	19
2.2.6	Dial from Personal Directory	20
2.2.7	Dial from Group Directory.....	20
2.2.8	Dial from Call History	21
2.2.9	Dial from Speed Dial Directory.....	21
2.2.10	Dial from a Search	22
2.3	Receive a Call.....	24
2.3.1	Answer a Call.....	24
2.3.2	Blind Transfer.....	24
2.3.3	Supervised Transfer	25
2.3.4	Open a URL.....	25
2.3.5	Save a vCard	26
2.4	During a Call	26
2.4.1	Hold a Call.....	26
2.4.2	Initiate Three-Way Conference	26
2.4.3	Initiate N-Way Conference	27
2.5	End Call.....	27
2.6	Voice Mail.....	27
2.6.1	Transfer to Voice Mail.....	27
2.6.2	Retrieve Voice Mail.....	28
3	Options Dialog	29
3.1	General.....	29
3.2	Account	30
3.3	Connection.....	31
3.4	Dialing Rules.....	32
3.5	Outlook Integration	33
3.5.1	Contacts	34
3.6	Updates.....	35

3.7	LDAP Integration	36
3.7.1	Directory	37
3.8	Web Screen Pop	38
3.9	About	39
4	Services Dialog	40
4.1	Incoming Calls	40
4.1.1	Anonymous Call Rejection	40
4.1.2	Call Forwarding Always	41
4.1.3	Call Forwarding No Answer	42
4.1.4	Call Forwarding Busy	43
4.1.5	Do Not Disturb	44
4.1.6	External Calling Line ID Delivery	45
4.1.7	Internal Calling Line ID Delivery	46
4.1.8	Simultaneous Ringing	47
4.1.9	CommPilot Express	48
4.2	Outgoing Calls	53
4.2.1	Automatic Callback	53
4.2.2	Calling Line ID Delivery Blocking	54
4.3	Call Control	54
4.3.1	Remote Office	55
4.3.2	Call Waiting	56
4.4	Messaging	56
4.4.1	Voice Management	57
5	Troubleshooting	58
5.1	Using Assistant with Microsoft Windows Service Pack 2 (SP2)	58
5.2	Assistant is Not Visible in Outlook	59
5.3	Register Assistant within Outlook	60
5.4	I Have Not Been Licensed to use Assistant	61
5.5	Assistant is Not Visible in Internet Explorer	61
Index	62

Table of Figures

Figure 1 Assistant Enterprise in Internet Explorer	7
Figure 2 Assistant Enterprise in Mozilla Firefox.....	7
Figure 3 Assistant Enterprise in Outlook.....	7
Figure 4 Assistant in Internet Explorer	7
Figure 5 Assistant in Firefox.....	7
Figure 6 Options Dialog – Accounts Page	8
Figure 7 Options Dialog – Connection Page.....	9
Figure 8 Options Dialog – Update Page	10
Figure 9 Options Dialog – General Page	11
Figure 10 Enabled Toolbar.....	11
Figure 11 Numbered Toolbar.....	12
Figure 12 Login Button	13
Figure 13 Options Button	13
Figure 14 Services Button.....	13
Figure 15 Remote Office Button	13
Figure 16 Simultaneous Ringing Button.....	14
Figure 17 CommPilot Profile Button	14
Figure 18 Call Forwarding Always Service Button	14
Figure 19 Call Forwarding No Answer Service Button.....	14
Figure 20 Call Forwarding Busy Service Button.....	14
Figure 21 Do Not Disturb Service Button	14
Figure 22 Speed Dial Directory Button.....	15
Figure 23 Call History Button	15
Figure 24 Personal Directory Button	15
Figure 25 Group Directory Button.....	15
Figure 26 Search Button	15
Figure 27 Assistant - Enterprise Drop-down List Button	15
Figure 28 Dial Contact Button.....	15
Figure 29 Dial Number Button	16
Figure 30 Answer Button.....	16
Figure 31 Hold Button.....	16
Figure 32 Transfer to Voice Mail Button.....	16
Figure 33 Blind Transfer Button	16
Figure 34 Conference Call Button	16
Figure 35 End Call Button	16
Figure 36 Call Lines Button.....	16
Figure 37 Dial Number Box.....	17
Figure 38 Re-dial a Previous Number	17
Figure 39 Dialing from Web Page	17
Figure 40 Right-click to Dial from E-mail	18
Figure 41 Dialing from Contact List	19
Figure 42 Dialing from vCard.....	19
Figure 43 Dialing from Outlook 2007 vCard.....	20
Figure 44 Personal Directory	20
Figure 45 Group Directory.....	21
Figure 46 Call History	21
Figure 47 Speed Dial Directory.....	22
Figure 48 Search Bar	22
Figure 49 Search Bar History.....	23
Figure 50 Call Notification	24
Figure 51 Transfer Button	25
Figure 52 Opening a URL through the Call Notification	25
Figure 53 Saving vCard through the Call Notification.....	26

Figure 54	Hold Button.....	26
Figure 55	Ending a Call through Call Notification	27
Figure 56	Transfer to Voice Mail Button.....	27
Figure 57	Options Dialog – General Page	29
Figure 58	Options Dialog – Account Page.....	30
Figure 59	Options Dialog – Connections Page.....	31
Figure 60	Options Dialog – Dialing Rules Page	32
Figure 61	Options Dialog – Outlook Integration Page.....	33
Figure 62	Options Dialog – Contacts Page.....	34
Figure 63	Options Dialog – Update Page	35
Figure 64	Options Dialog – LDAP Integration Page.....	36
Figure 65	Options Dialog – LDAP Integration – Directory Page.....	37
Figure 66	Options Dialog – Web Screen Pop Page.....	38
Figure 67	Options Dialog – About Page.....	39
Figure 68	Services Dialog – Anonymous Call Rejection Page.....	40
Figure 69	Services Dialog – Call Forwarding Always Page.....	41
Figure 70	Services Dialog – Call Forwarding No Answer Page	42
Figure 71	Services Dialog – Call Forwarding Busy Page	43
Figure 72	Services Dialog – Do Not Disturb Page	44
Figure 73	Services Dialog – External Calling Line ID Delivery Page	45
Figure 74	Services Dialog – Internal Calling Line ID Delivery Page.....	46
Figure 75	Services Dialog – Simultaneous Ringing Page	47
Figure 76	CommPilot Profiles	48
Figure 77	Services Dialog – CommPilot Express: Available – In Office Page.....	49
Figure 78	Services Dialog – CommPilot Express: Available – Out of Office	50
Figure 79	Services Dialog – CommPilot Express: Busy Page	51
Figure 80	Services Dialog – CommPilot Express: Unavailable Page	52
Figure 81	Services Dialog – Automatic Callback.....	53
Figure 82	Services Dialog – Outgoing Calls: Calling Line ID Delivery Blocking	54
Figure 83	Services Dialog – Call Control: Remote Office	55
Figure 84	Services Dialog – Call Control: Call Waiting	56
Figure 85	Services Dialog – Messaging: Voice Management	57
Figure 86	Internet Explorer Warning	58
Figure 87	Internet Explorer Warning	58
Figure 88	Internet Explorer Security Warning.....	58
Figure 89	Outlook Toolbar Options	59
Figure 90	Help Dialog, Disabled Items.....	60
Figure 91	Disabled Items Dialog.....	60
Figure 92	License Notification.....	61
Figure 93	Internet Explorer Toolbar Options.....	61

1 About This Guide

Assistant – Enterprise is a carrier-class, lightweight desktop communications management products for everyday users of Microsoft Outlook, Microsoft Internet Explorer, or Mozilla Firefox with the BroadSoft telephony soft switch platform.

With this product you can manage your incoming and outgoing messages, maintain up-to-date connection information and configure controls on your calls and voice mail.

This guide provides step-by-step procedures and reference information for Assistant – Enterprise Release 14.sp1.

In this document, Assistant – Enterprise is referred to as Assistant – Enterprise, respectively.

1.1 Open Assistant – Enterprise

BroadWorks Assistant is an add-in to Microsoft Internet Explorer, Outlook, and Mozilla Firefox, and provides new toolbars to access BroadWorks Service and Call Management features within your web browser and mail client.

When you open Internet Explorer, Outlook, or Firefox with Assistant you see the following toolbar. Most buttons are disabled until you log in.

NOTE: Only BroadWorks Assistant – Enterprise is available for use with Microsoft Outlook.



Figure 1 Assistant Enterprise in Internet Explorer



Figure 2 Assistant Enterprise in Mozilla Firefox

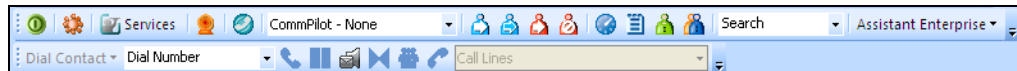


Figure 3 Assistant Enterprise in Outlook



Figure 4 Assistant in Internet Explorer



Figure 5 Assistant in Firefox

1.2 First Time Login

Logging in to Assistant identifies you to the servers that manage your phone services. This is so you can receive, initiate, and control calls directly from your computer.

When you log in for the first time, you need to configure your connection settings as described in the following steps. Once these settings are configured, you do not need to provide them again.

You can log in directly from the toolbar by clicking Login.

- 1) Click **Login** on the toolbar.
Assistant opens the *Options* dialog.
- 2) Click **Accounts**.
- 3) To configure your account settings, enter the user name and password for your BroadWorks account in the fields provided.
- 4) Check the *Save Username* and *Save Password* options if you want to avoid being prompted for this information next time you log in. Your password is encrypted for greater security.
- 5) Click **Apply**.

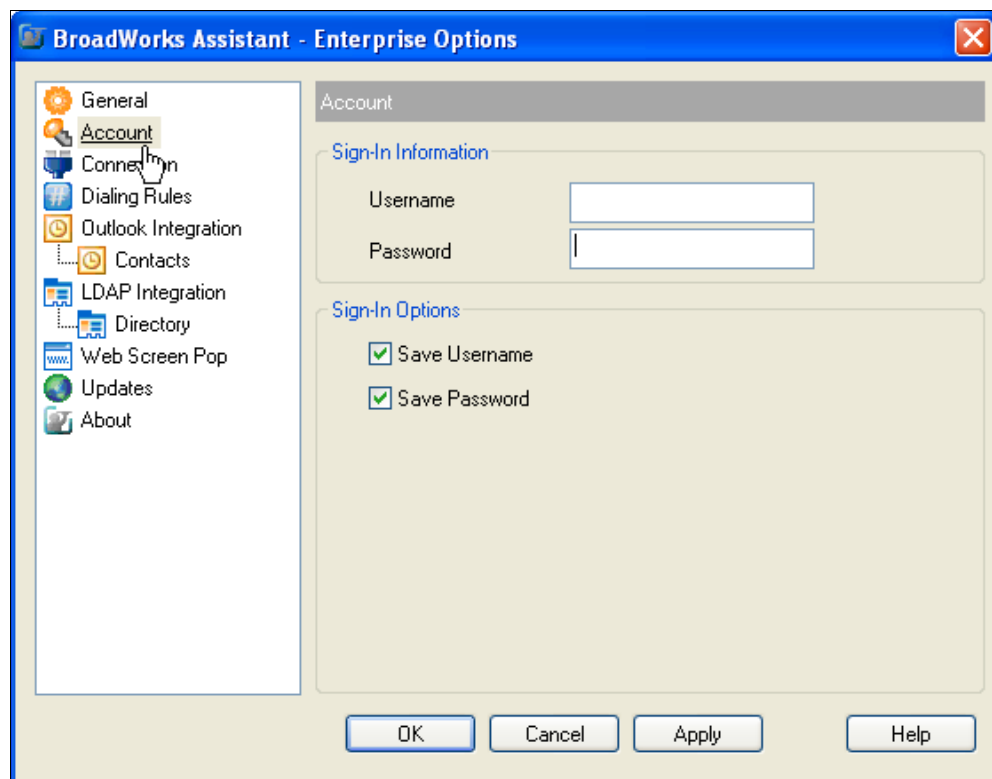


Figure 6 Options Dialog – Accounts Page

- 6) Configure your server connection by clicking **Connection**.
- 7) Enter the server URL and port number in the fields provided. Consult your system administrator for the necessary values.
- 8) Click **Apply**.

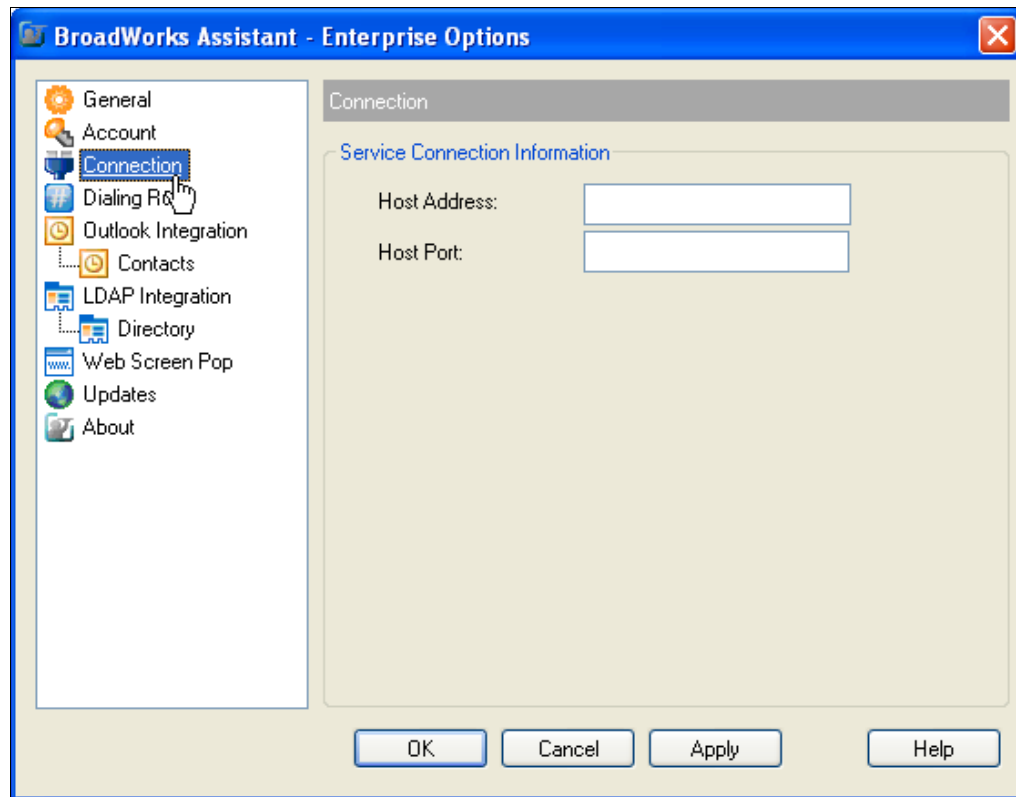


Figure 7 Options Dialog – Connection Page

- 9) If you use a proxy server to access the internet, click **Update**.
- 10) Enter the proxy server information in the fields provided. Consult your system administrator for the necessary values.
- 11) Click **Apply**.

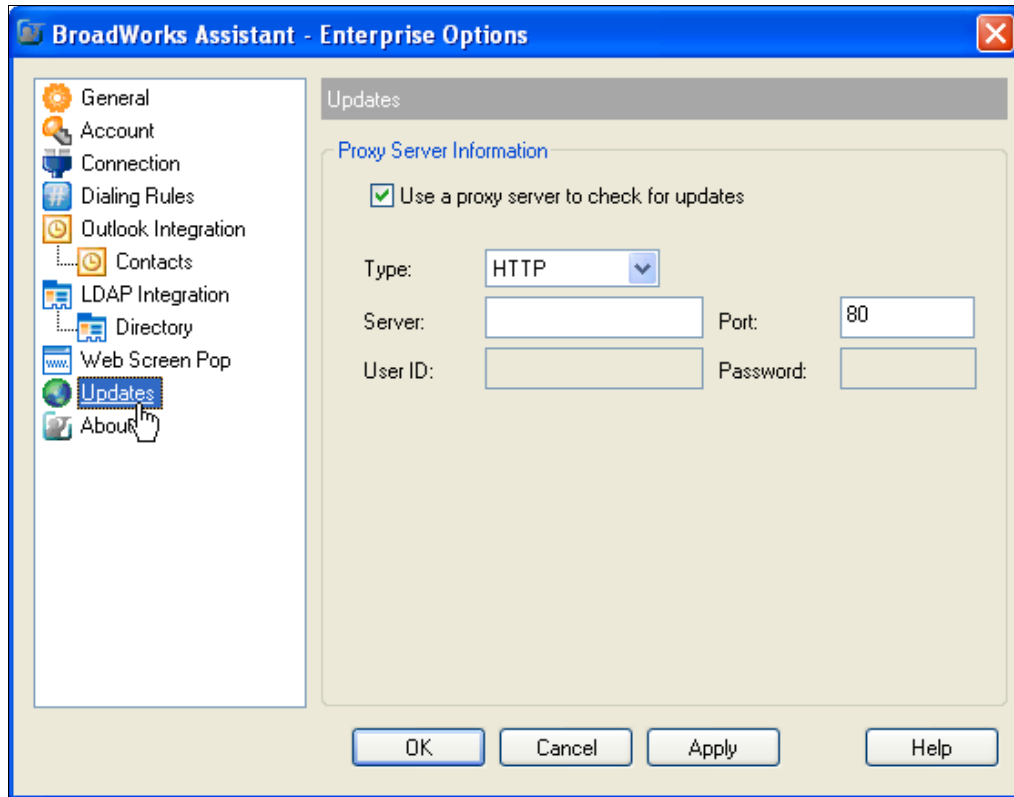


Figure 8 Options Dialog – Update Page

NOTE: The proxy server is not used to connect to BroadWorks for telephony services; it is used only to silently check for available Assistant upgrades.

- 12) To configure your general settings, click **General** in the tree view to the left of the *Options* dialog.
- 13) Check *Auto login on start-up* to have Assistant connect automatically to the BroadWorks server when you start Internet Explorer, Firefox, or Outlook.
- 14) Check the *Auto login when connected to network* to have Assistant connect automatically to the BroadWorks server when a network connection is available.
- 15) Click **OK**.

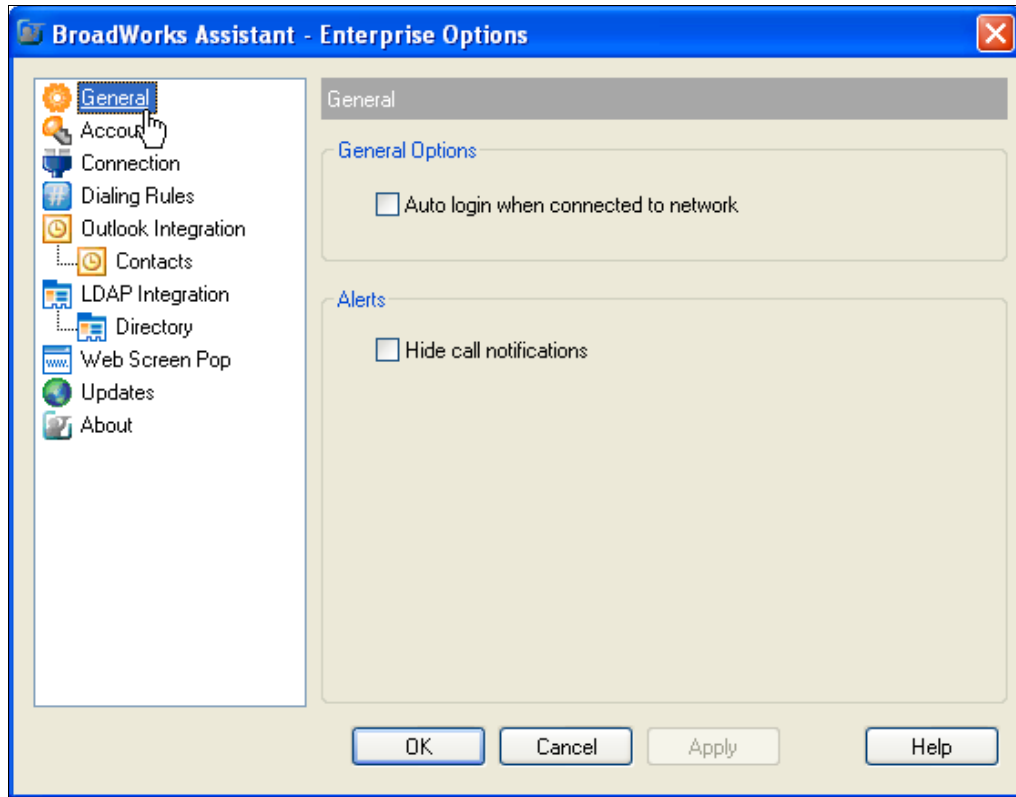


Figure 9 Options Dialog – General Page

- 16) Click **Login** again to finish the login process. If your configuration and credentials are correct, you are connected to the BroadWorks server and the buttons on your toolbar are enabled.



Figure 10 Enabled Toolbar

1.3 Subsequent Use

Once you have configured BroadWorks Assistant with the settings it needs to connect to your service provider, you can log in without having to provide that information again.

2 Using Assistant

When you have successfully logged in to Assistant, most of the buttons on your toolbar are enabled.

2.1 The Toolbar

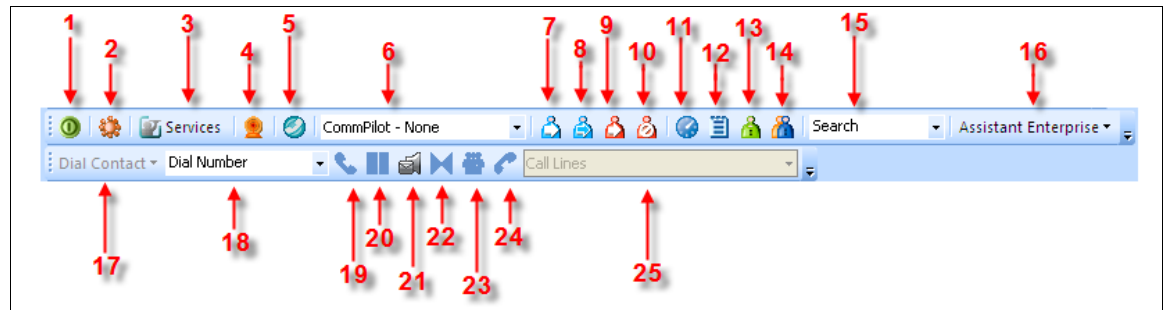


Figure 11 Numbered Toolbar

The following legend provides the names to the buttons. This is followed by more detailed information.

Legend:

1. Login button
2. Options dialog
3. Services
4. Remote Office
5. Simultaneous Ringing
6. Current CommPilot Profile
7. Call Forwarding Always Service
8. Call Forwarding No Answer Service
9. Call Forwarding Busy Service
10. Do Not Disturb Service
11. Speed Dial Directory
12. Call History
13. Personal Directory
14. Group Directory
15. Search
16. Assistant Enterprise drop-down list
17. Dial Contact
18. Dial Number
19. Answer
20. Hold

21. Transfer to Voice Mail
22. Blind Transfer
23. Conference Call
24. End
25. Call Lines

Detailed Description of Buttons

1. **Login** : Logs in and out of Assistant. The color of this icon indicates your login status.

A grey icon indicates that you are not logged in. A green icon shows that you are currently logged in. A disabled button shows that Assistant is attempting to log in. A red button indicates that your last login attempt failed.



Figure 12 Login Button

2. **Options**: You can configure your BroadWorks account, connection settings, and dialing rules through this dialog. This icon is highlighted when open.



Figure 13 Options Button

3. **Services** : You can configure the Call Management services provided by Assistant. This icon is highlighted when in use.

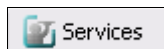


Figure 14 Services Button

4. **Remote Office** : When activated, this service allows you to use an alternate phone, such as a mobile, home, or hotel phone, as your main business phone. When this service is enabled, the icon is highlighted.

If Remote Office is not yet configured when you use this icon, Assistant opens the *Services* dialog to the *Remote Office* page so you can configure the service.



Figure 15 Remote Office Button

5. **Simultaneous Ringing** : This allows you to set up a list of up to ten additional phone numbers that ring each time you receive a call. While the service is enabled, the icon remains highlighted.

If Simultaneous Ringing is not yet configured when you use this icon to activate the service, Assistant opens the *Service* dialog to the *Simultaneous Ringing* page for you to configure the service.



Figure 16 Simultaneous Ringing Button

- 6. Current CommPilot Profile** sets the current CommPilot Express profile, which determines the way the system handles incoming calls. You can configure the settings for your CommPilot Express profiles in the *Services* dialog.

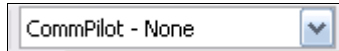


Figure 17 CommPilot Profile Button

- 7. Call Forwarding Always Service** automatically forwards all incoming calls to a specified phone number. When this service is enabled, this icon remains highlighted.
If Call Forwarding Always is not yet configured when you use this icon to activate the service, Assistant opens the *Service* dialog to the *Call Forwarding Always* page for you to configure the service.



Figure 18 Call Forwarding Always Service Button

- 8. Call Forwarding No Answer Service** automatically forwards all incoming calls to a specified phone number when you do not answer within a specified number of rings. While the service is enabled, the icon remains highlighted.



Figure 19 Call Forwarding No Answer Service Button

- 9. Call Forwarding Busy Service** forwards all incoming calls to a specified phone number when you are busy on other calls. While the service is enabled, this icon remains highlighted.
If Call Forwarding Busy is not yet configured when you use this icon to activate the service, Assistant opens the *Services* dialog to the *Call Forwarding Busy* page for you to configure the service.



Figure 20 Call Forwarding Busy Service Button

- 10. Do Not Disturb Service** automatically forwards all incoming calls to your Voice Messaging service, or plays callers a busy tone if you do not have a Voice Messaging service configured. While the service is enabled, this icon remains highlighted.



Figure 21 Do Not Disturb Service Button

- 11. Speed Dial Directory** allows you to dial phone numbers saved in your speed dial list by clicking them with your mouse.



Figure 22 Speed Dial Directory Button

- 12. Call History** opens the list of your most recent received calls, missed calls, and dialed calls.



Figure 23 Call History Button

- 13. Personal Directory** allows you to dial phone numbers saved in your personal list by clicking them with your mouse.



Figure 24 Personal Directory Button

- 14. Group Directory** permits you to dial phone numbers saved in your personal list by clicking them with your mouse.



Figure 25 Group Directory Button

- 15. Search** hunts in the group, personal, Outlook Express, and Lightweight Directory Access Protocol (LDAP) directories for the criteria you enter.



Figure 26 Search Button

- 16. Assistant - Enterprise drop-down list** contains URLs pre-configured by your service provider administrator. Select an item from the list to navigate to that page in your web browser.

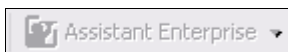


Figure 27 Assistant - Enterprise Drop-down List Button

- 17. Dial Contact** dials the business, home, or mobile number of a selected contact within Microsoft Outlook.

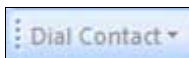


Figure 28 Dial Contact Button

18. **Dial Number** dials a specified number.

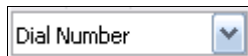


Figure 29 Dial Number Button

19. **Answer** answers an incoming call.



Figure 30 Answer Button

20. **Hold** puts the current call on hold.



Figure 31 Hold Button

21. **Transfer to Voice Mail** transfers the current call to your *Voice Messaging* service.



Figure 32 Transfer to Voice Mail Button

22. **Blind Transfer** transfers the current call to another phone number.



Figure 33 Blind Transfer Button

23. **Conference Call** starts a conference call that can include 3 to 32 callers. This button only becomes enabled when you are connected to two other parties at the same time.



Figure 34 Conference Call Button

24. **End Call** ends the current call.



Figure 35 End Call Button

25. **Call Lines** is a list of phone numbers you are currently connected to.

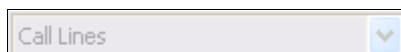


Figure 36 Call Lines Button

2.2 Make a Call

2.2.1 Dial Number

To dial a new number:

- 1) Type the number in the *Dial Number* box.
- 2) To place the call, press ENTER.
- 3) To end the call, click **End**.



Figure 37 Dial Number Box

To re-dial a previously dialed number:

- 1) Select a number by clicking on the arrow at the right-hand side of the *Dial Number* box.

A list of up to 10 previously dialed numbers is displayed.

- 2) Click on a number in the *Dial Number* list.
- 3) To place the call, press ENTER.
- 4) To end the call, click **End**.

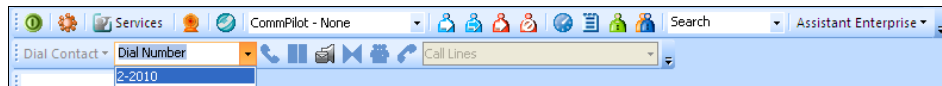


Figure 38 Re-dial a Previous Number

2.2.2 Dial from Web Page

To dial from a web page:

- 1) Select the phone number displayed on a web page.
- 2) Highlight the number with your mouse.
- 3) Right-click the highlighted phone number and select *Dial* from the pop-up window.



Figure 39 Dialing from Web Page

2.2.3 Dial from E-mail

NOTE: At the time this document was printed, this feature was only available in Outlook 2002 and Outlook 2003. This is, by design, a limitation of Outlook 2000 and Outlook 2007.

Make sure that the e-mail you wish to dial from is in the HTML format. To dial a contact from an outlook e-mail, follow these steps:

- 1) Open the e-mail that contains the phone number you wish to dial. Make sure it is either an open message or in the preview format.
- 2) Use your mouse to highlight the number you wish to dial.
- 3) Right-click the highlighted number. A drop-down list appears. Click on **Dial**. The phone call is now placed.

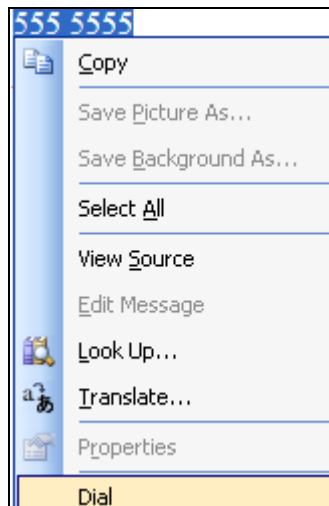


Figure 40 Right-click to Dial from E-mail

2.2.4 Dial from Contact List

With Assistant – Enterprise you can dial the home, business, or mobile number of any contact directly within Outlook.

- 1) Click *Contact* in the folder list.
- 2) Select the contact you wish to call from the contact list.
- 3) Click the arrow at the right-hand side of the *Dial Contact* drop-down list, on the Assistant toolbar within Outlook.
- 4) Select the type of number to call.

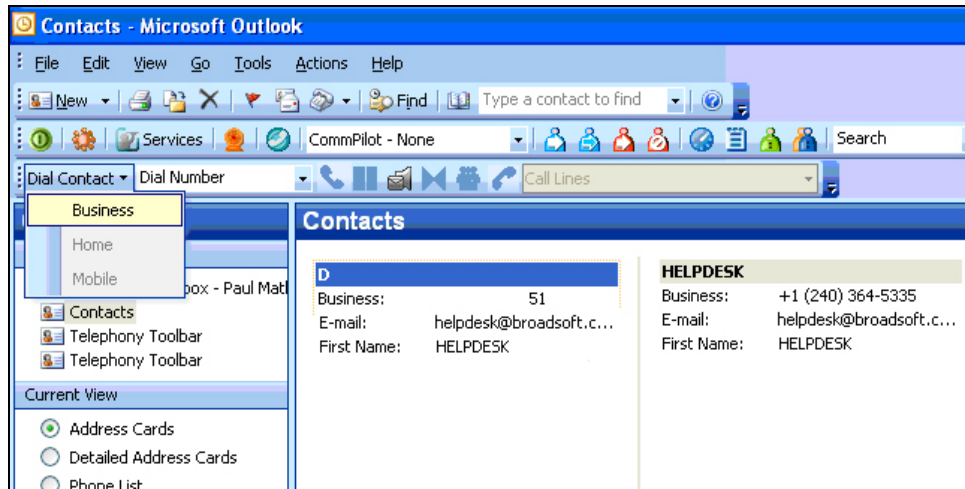


Figure 41 Dialing from Contact List

2.2.5 Dial from vCard

To dial from a vCard in Outlook 2000/2002/2003:

- 1) Click *Contacts* in the folder list.
- 2) Double-click the contact you want to call. Outlook opens the contact's vCard.
- 3) Click the arrow at the right-hand side of the *Dial Contact* drop-down list, on the Assistant toolbar within Outlook.
- 4) Select the type of number to call.

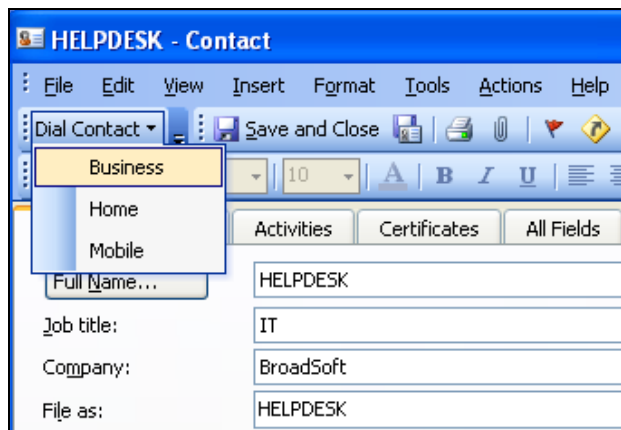


Figure 42 Dialing from vCard

To dial from a vCard in Outlook 2007:

- 1) Click *Contacts* in the folder list.
- 2) Double-click the contact you want to call. Outlook opens the contact's vCard.
- 3) Click the **Telephony Toolbar** tab.
- 4) Select the type of number to call.



Figure 43 Dialing from Outlook 2007 vCard

NOTE: If there is no number specified for a contact, but you click on the Home, Business, or Mobile buttons in your vCard ribbon, a message appears stating “No number is specified for this contact”. This is, by design, a limitation of Microsoft Outlook 2007 API.

2.2.6 Dial from Personal Directory

You can directly dial any number stored in your personal directory as it is integrated with the contacts in Assistant.

- 1) To open the personal directory, click **Personal Directory** on the Assistant toolbar.
This page can be printed using the host application. Users with Microsoft Windows XP Service Pack 2 installed may encounter a warning when opening the Personal Directory. For more information, see section [5 Troubleshooting](#).
- 2) To sort the personal directory, click on a *column* header. The table is sorted, in descending order, according to the information in the column you selected.
- 3) To change the sort order between descending and ascending, click on the same *column* header again.
- 4) To dial a number from the personal directory, click on the desired phone number. Assistant places the call.

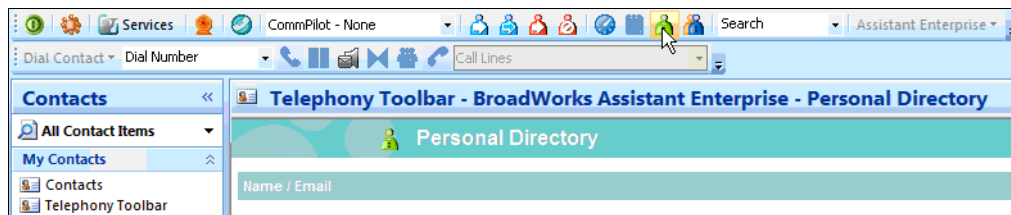


Figure 44 Personal Directory

2.2.7 Dial from Group Directory

You can directly dial any number stored in your group directory that integrates the group contacts, provided by your service provider, with Assistant.

- 1) Click **Group Directory** on the Assistant toolbar.
This list can be printed using the host application. Users with Microsoft Windows XP Service Pack 2 installed may encounter a warning when opening the Group Directory. For more information, see section [5 Troubleshooting](#).
- 2) To sort the group directory, click on a *column* header. The table is sorted, in descending order, according to the information in the column you selected.

- 3) To change the sort order between descending and ascending, click on the same *column* header again.
- 4) To dial a number from the group directory, click on the desired phone number. Assistant places the call.

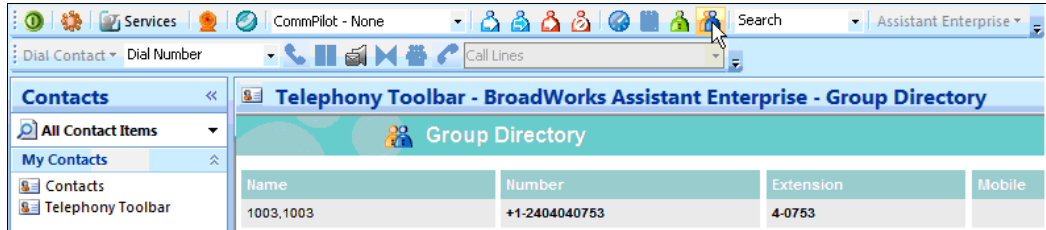


Figure 45 Group Directory

2.2.8 Dial from Call History

Call History allows users to view their missed calls, received calls, and dialed calls. These are listed in reverse chronological order.

- 1) To open the Call History, click **Call History** on the toolbar.
- 2) To dial from the call history, click on the desired phone number. Assistant automatically places the call.

Missed Calls		Received Calls		Dialed Calls	
Ig 1024	1024	Ron Kribb	1008	Ig 1024	1024
13/1/2006, 16:45:59		13/1/2006, 16:38:09		13/1/2006, 17:11:15	
Ig 1022	1022	Ron Kribb	1008	Ig 1022	1022
9/1/2006, 17:48:53		13/1/2006, 12:21:40		13/1/2006, 16:45:03	
Ig 1022	1022	Carlos King	1010	Ig 1022	1022
9/1/2006, 17:48:49		12/1/2006, 12:15:33		13/1/2006, 16:44:18	
Ig 1022	1022	Ron Kribb	1008	Ig 1022	1022
9/1/2006, 17:48:42		9/1/2006, 17:12:43		13/1/2006, 16:43:45	

Figure 46 Call History

2.2.9 Dial from Speed Dial Directory

You can dial from the speed dial directory.

- 1) To open the Speed Dial Directory, click **Speed Dial Directory** on the Assistant toolbar.
- 2) To dial from the speed dial directory, click the desired phone number and Assistant places the call.

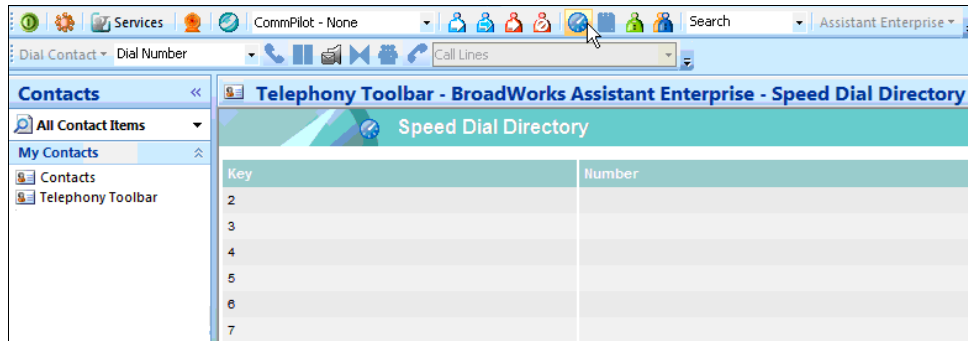


Figure 47 Speed Dial Directory

2.2.10 Dial from a Search

Use the *Search* drop-down list to search for a user or contact. The search results include all users in the Group, Personal, Outlook Express, and LDAP directories, if configured to do this. Your search returns all users that match your criteria in any field. For example, if you enter “sa” as your criteria, your search might return users with the first name “Sally” or with the last name “Sanders” as well as users in the department “sales”.

You can also search for users by phone number.

To search for a user:

- 1) Type your criteria in the *Search* box.
- 2) Press ENTER to execute the search.

Assistant displays the results of your search.

- 3) Click the phone number you want to dial.
- 4) To end the call, click **End**.

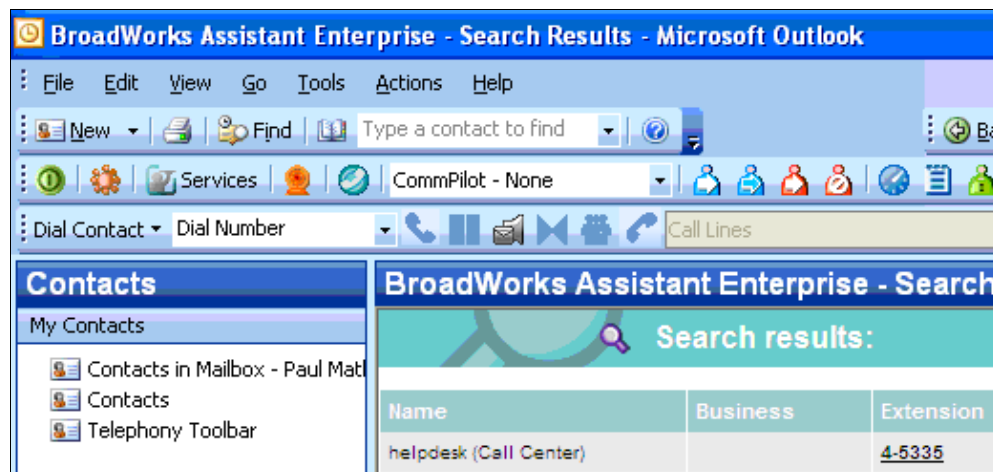


Figure 48 Search Bar

To re-execute a previous search:

- 1) Select a previous search criteria by clicking on the arrow at the right-hand side of the *Search* box.

- A list of previous search criteria is displayed.
- 2) Select an item in the list.
Assistant displays the results of your search.
 - 3) Click the phone number you want to dial.
 - 4) To end the call, click **End**.

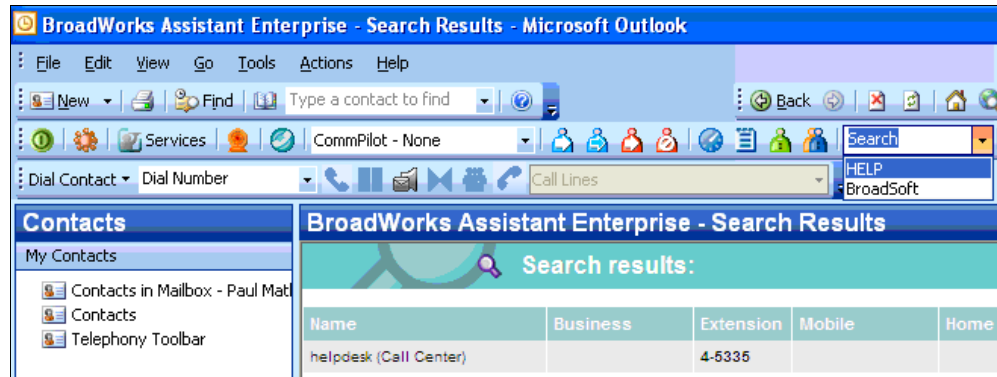


Figure 49 Search Bar History

2.3 Receive a Call

2.3.1 Answer a Call

NOTE: You can only answer a call via Assistant if you have an Advanced Call Control (ACC) compliant phone.

When you receive a call, Assistant displays a call notification window on top of the system tray. You can answer this call by picking up your handset from the Assistant toolbar or by clicking the call notification (only if you have an Advanced Call Control [ACC] compliant phone).

- To answer a call from Assistant toolbar, click **Answer**.
- To answer a call from the call notification, click on it.

When using Assistant – Enterprise with Outlook, if the incoming call does not provide a name for the calling party, Assistant checks the number against your Outlook contacts and displays the corresponding name if it finds a match.

You can also transfer the caller to your Voice Mail, save a vCard for the caller, open a URL populated with the caller's number, or end the call directly from the call notification.

2.3.1.1 Call Notification

When you initiate or receive a call, Assistant displays a notification window above the system tray, which includes the other party's phone number and other information about the call. Clicking the hyperlinked text in the call notification automatically answers the call.

The call notification stays open for the duration of the alerting call.

If you initiate or receive another call while the first notification is open, the call notifications stack on top of one another.

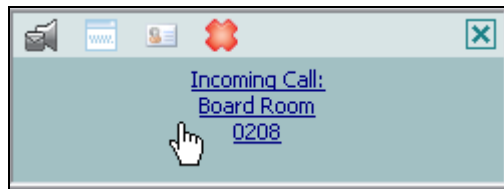


Figure 50 Call Notification

2.3.2 Blind Transfer

Use this method to transfer a call to another specified number without providing an introduction to the destination party.

Calls may be transferred this way while active, held, or ringing on your phone. In the latter case, the system redirects the call before it is answered.

- 1) If the first party is not already on the line, dial a number on your phone or select a number using any of the methods described in section [2.2 Make a Call](#).
- 2) Call the second number. This automatically puts the first party on hold if the first party is not already on hold.

- 3) Initiate the transfer by clicking Transfer on the toolbar. The parties are now connected.



Figure 51 Transfer Button

2.3.3 Supervised Transfer

Use this method to transfer a call to another specified number and (optionally) provide an introduction to the destination party. Calls may be transferred this way while active, held, or ringing on your phone.

When a supervised transfer is initiated, the primary call is placed on hold and a call is made to the party intended to receive the call. The receiving party may be consulted prior to accepting the call.

- 1) If the first party is not already on the line, dial a number on your phone or select a number using any of the methods described in section [2.2 Make a Call](#).
- 2) Call the second number. This automatically puts the first party on hold.
- 3) Click **Transfer** on the toolbar.
- 4) Wait until the called party accepts your call, and then click **Transfer** again to connect the parties.

2.3.4 Open a URL

When you receive a call, Assistant displays a call notification window on top of the system tray.

To open a URL in your browser, click **Web Pop URL** in the call notification.

This opens a page in your browser window that contains information about the calling party encoded in its URL.

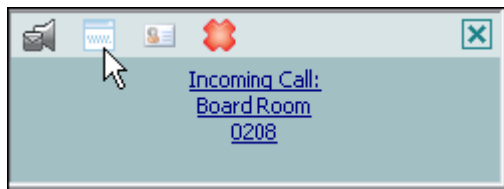


Figure 52 Opening a URL through the Call Notification

You can also transfer the caller to your Voice Mail, save a vCard for the caller, open a URL populated with the caller's number, or end the call directly from the call notification.

2.3.5 Save a vCard

When you receive a call, Assistant displays a call notification window on top of the system tray.

You can click a button in this notification to save the caller's phone number and personal information as a vCard in Outlook. To do this, click **Add vCard** in the call notification.

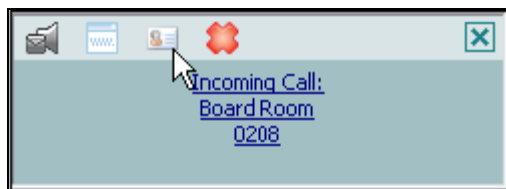


Figure 53 Saving vCard through the Call Notification

You can also transfer the caller to your Voice Mail, save a vCard for the caller, open a URL populated with the caller's number, or end the call directly from the call notification.

2.4 During a Call

2.4.1 Hold a Call

- 1) To hold a call, click **Hold** on the toolbar. The Hold button is grayed out to indicate the held status of the call.
- 2) To resume a held call, click **Answer** (highlighted) on the toolbar. The hold returns to its normal state to indicate the active status of the call.



Figure 54 Hold Button

2.4.2 Initiate Three-Way Conference

NOTE: You must have the Three-Way Call service assigned to you to use this feature.

You can initiate a conference with two other parties directly from the toolbar. To establish two simultaneous active calls, you must have only two phone numbers listed in the *Call Lines* drop-down list. These calls may have been initiated either by you or by the other parties.

- 1) To start the conference, click **Three-Way Conference** on the toolbar.
- 2) To drop only one participant from the conference, select the participant's number from the *Call Lines* drop-down list and click **End**.

2.4.3 Initiate N-Way Conference

NOTE: You must have the N-Way Call service assigned to you to use this feature.

You can initiate a conference with two or more (up to 31) other parties directly from this toolbar. You must have at least two phone numbers listed in the *Call Lines* drop-down list. All calls on the list are added to the conference. These calls may be initiated either by you or by the other parties.

- 1) To start the conference, click **N-Way Conference** on the toolbar.
- 2) To add new incoming or outgoing calls to the conference, click **N-Way Conference** on the toolbar.
- 3) To drop only one participant from the conference, select the participant's number from the *Call Lines* drop-down list and click **End**.

2.5 End Call

You can end both incoming and outgoing calls directly from the toolbar and from the call notification window.

- To end a call from the toolbar, click **End** on the toolbar.
- To end a call from the call notification, click **End Call**.



Figure 55 Ending a Call through Call Notification

2.6 Voice Mail

2.6.1 Transfer to Voice Mail

You can transfer calls to your Voice Mail from the toolbar and from the call notification window.

To transfer a call to Voice Mail from the Assistant toolbar, click **Voice Mail Transfer** on the toolbar.



Figure 56 Transfer to Voice Mail Button

To transfer a call to Voice Mail from the call notification, click the Voice Mail Transfer icon in the notification window.

2.6.2 Retrieve Voice Mail

Make sure that you are not currently engaged in a call. No entries must be present on the *Call Lines* drop-down list.

Transfer yourself to your Voice Mail by clicking **Voice Mail Transfer** on the toolbar.

3 Options Dialog

The *Options* dialog allows you to configure the connection and account settings that Assistant uses to communicate with your service provider. The left-hand side of the dialog contains a tree view, listing the configuration pages you can access. The configuration pages you select in the tree view are displayed on the right.

- 1) Click **OK** to save all changes and close the dialog.
- 2) Click **Apply** to save all changes without closing the dialog. Cancel closes the dialog without saving your changes.

3.1 General

The *General* page allows you to configure the automatic login behavior of Assistant.

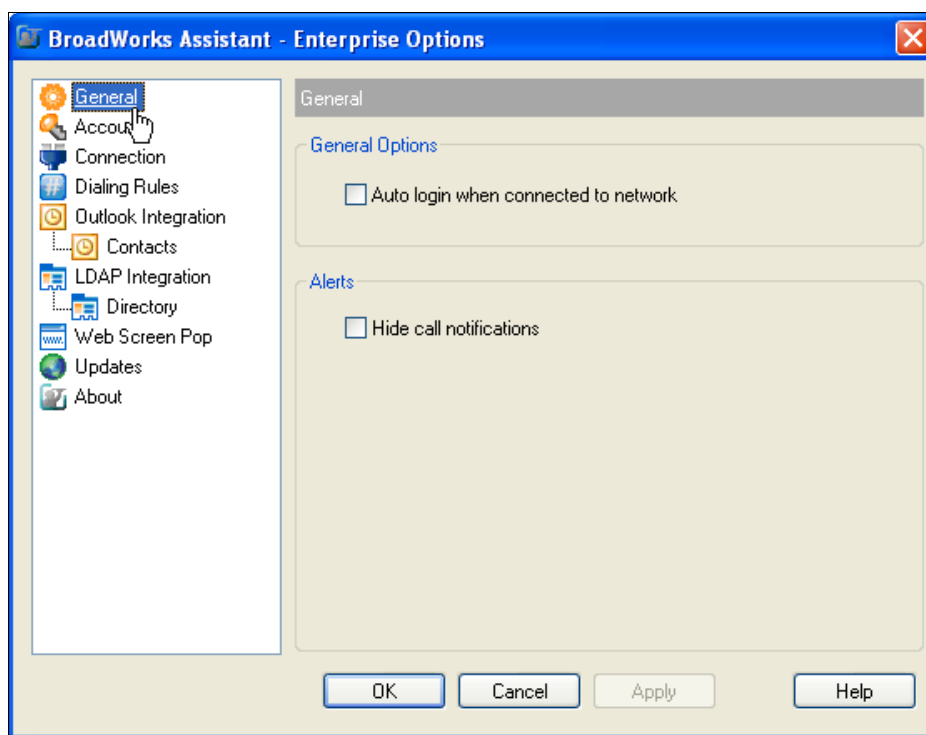


Figure 57 Options Dialog – General Page

- *Auto login when connected to network* automatically logs in to your service provider when it detects an active network connecting on your computer.
- *Hide Call Notification* disables the call notification window. When this box is checked, the call notification does not appear when Assistant detects an incoming or outgoing call.

3.2 Account

The *Account* page allows you to specify your BroadWorks user name and password.

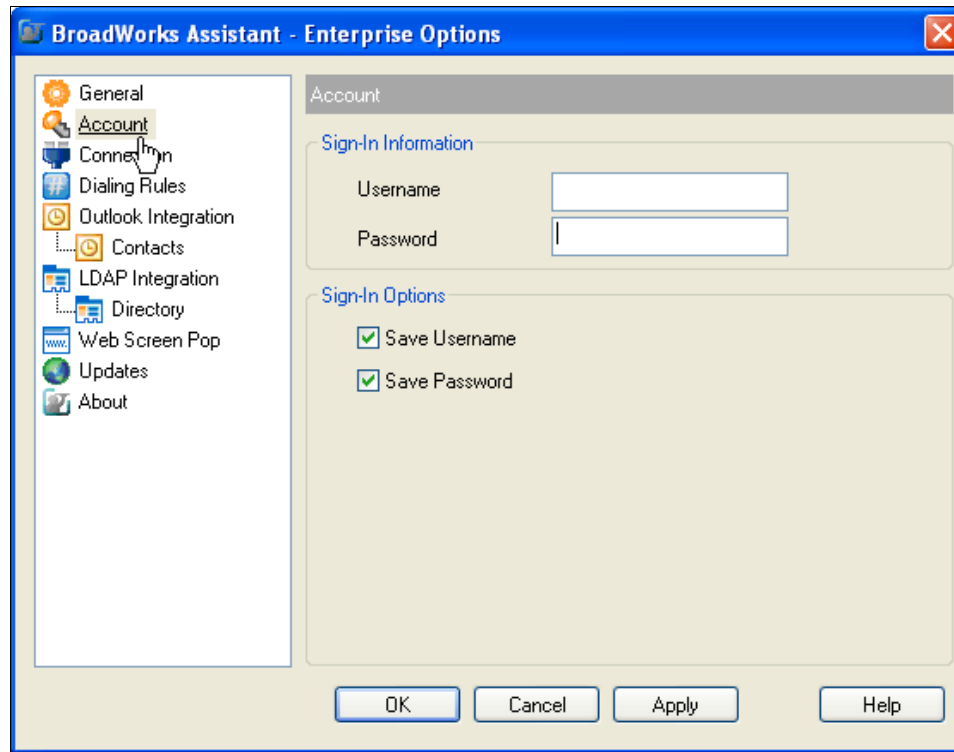


Figure 58 Options Dialog – Account Page

Contact your service provider or system administrator if you do not know the appropriate settings. Once you successfully log in, the controls on this page become inactive.

- *Save Username* determines whether Assistant saves the user name you provide. Check this box to avoid having to specify your user name each time you log in to the program.
- *Save Password* determines whether Assistant saves the password you provide above. Check this box to avoid having to specify your password each time you log into Assistant.

Assistant encrypts your password for greater security.

3.3 Connection

The *Connection* page allows you to specify the network address of the BroadWorks server that Assistant connects to.

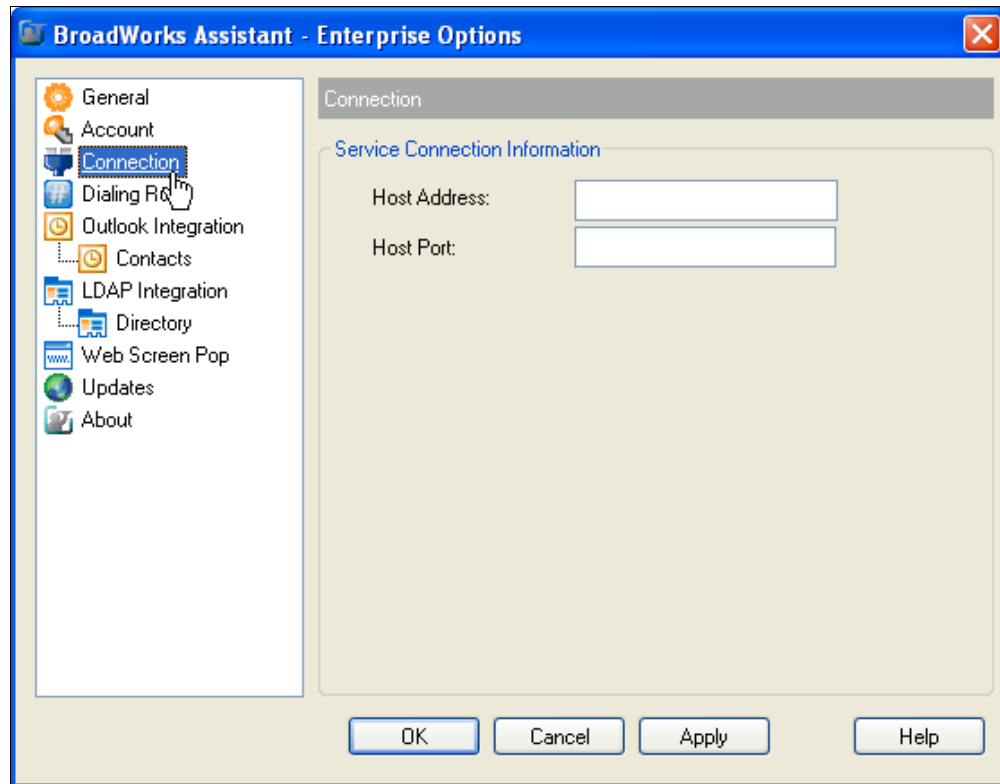


Figure 59 Options Dialog – Connections Page

Contact your service provider or system administrator if you do not know the appropriate settings. Once you successfully log in, the controls on this page become inactive.

- *Host Address* specifies the URL or IP address which Assistant attempts to connect to when logging in.
- *Host Port* is the port number used by the BroadWorks server on the host specified above.

3.4 Dialing Rules

The *Dialing Rules* page allows you to configure special dialing rules for Assistant.

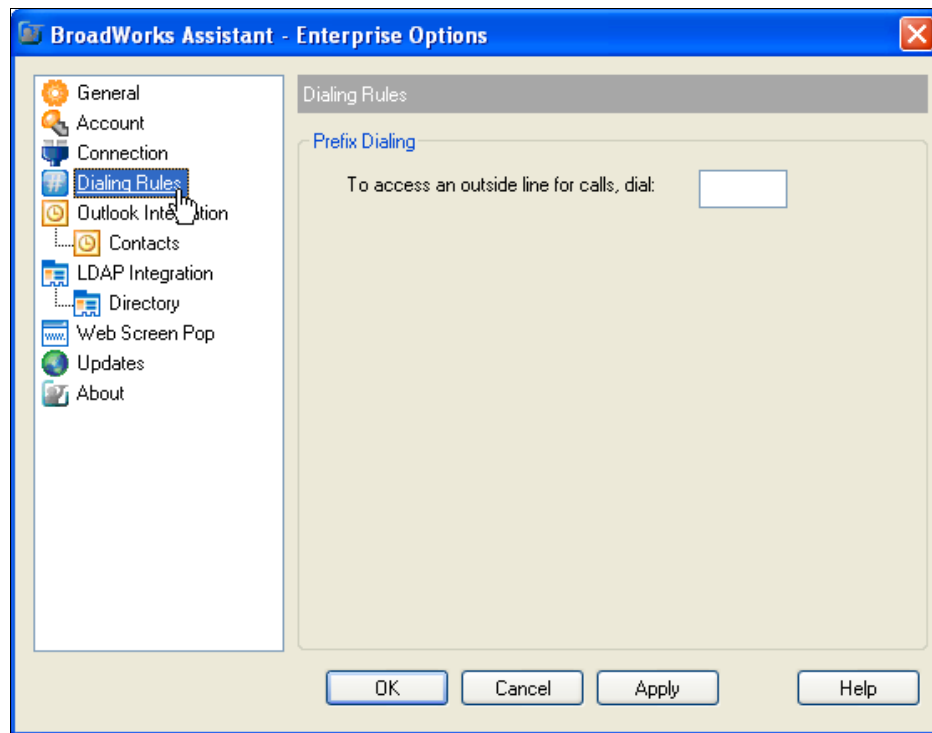


Figure 60 Options Dialog – Dialing Rules Page

To access an outside line for calls, dial specifies a prefix number that Assistant includes automatically when dialing external numbers.

If entered, this number is prepended only to dialed numbers that contain more than six digits. Up to five digits may be entered in this field.

Valid characters are the numbers 0 to 9 and the symbol “+”. If you include the “+” character, it must be the first character in the field.

3.5 Outlook Integration

The *Outlook Integration* page enables and disables the use of Assistant – Enterprise with Microsoft Outlook. As of Outlook 2007 you are unable to dial a contact in your in box using the right click-to-dial function.

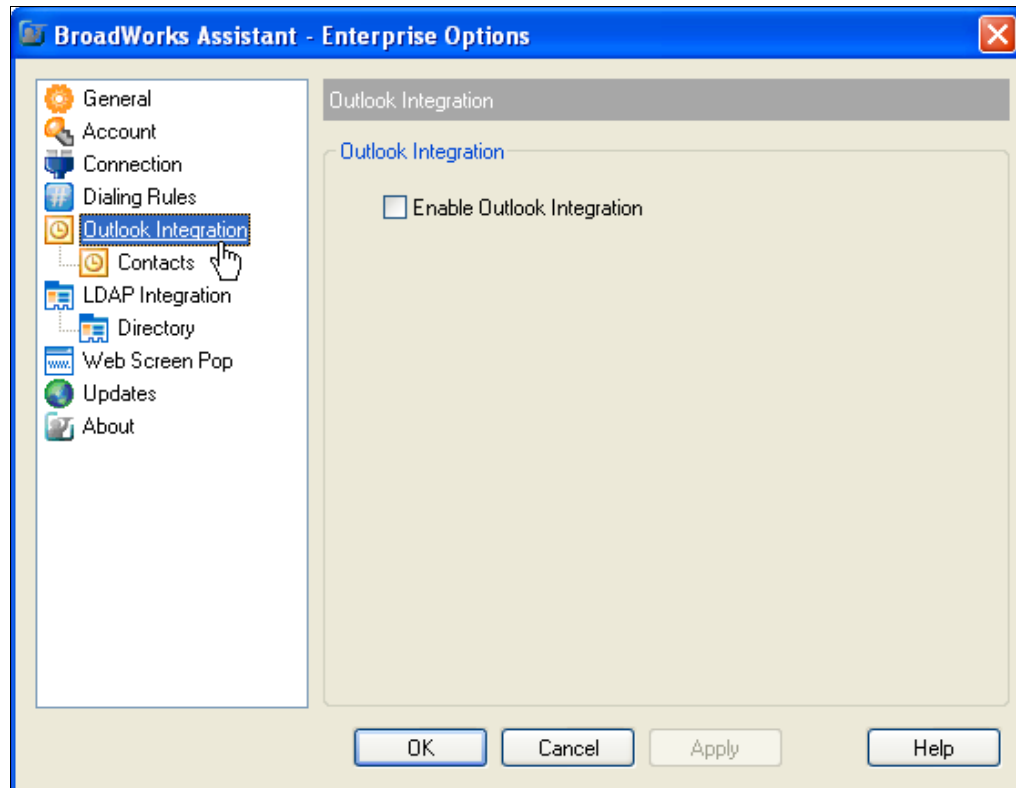


Figure 61 Options Dialog – Outlook Integration Page

The *Enable Outlook Integration* check box, when checked, makes sure that the Outlook integration features are activated. When unchecked, the toolbar is unavailable within Outlook and you are unable to dial contacts directly.

3.5.1 Contacts

The *Contacts* page allows you to configure the way Assistant integrates with your Outlook contact list.

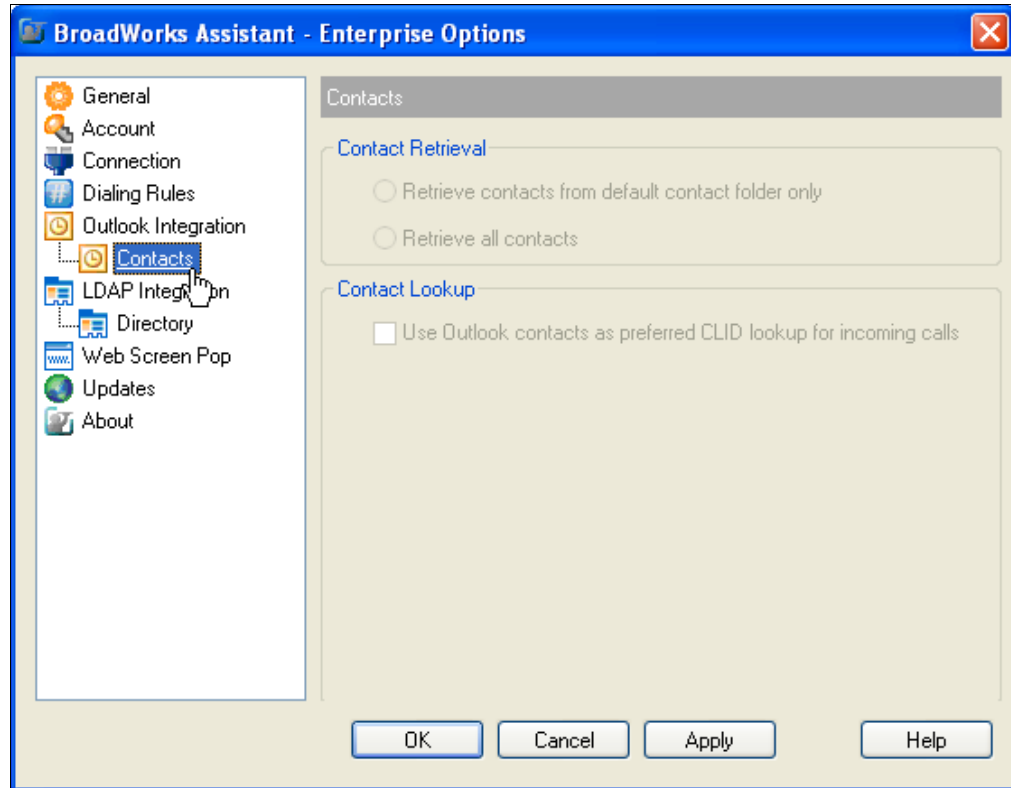


Figure 62 Options Dialog – Contacts Page

- The *Retrieve contacts from default contact folder only* option searches for and retrieves contacts stored in the default *Contacts* folder within Outlook.
- The *Retrieve all contacts* option searches for and retrieves contacts stored in any Outlook folder.
- *Use Outlook contacts as preferred CLID lookup for incoming calls* determines whether Assistant uses the information saved in your Outlook contact list when displaying information about callers, instead of using group settings or other calling line ID information.

3.6 Updates

The *Updates* page allows you to configure a web proxy server for Assistant to use when connecting to the Internet.

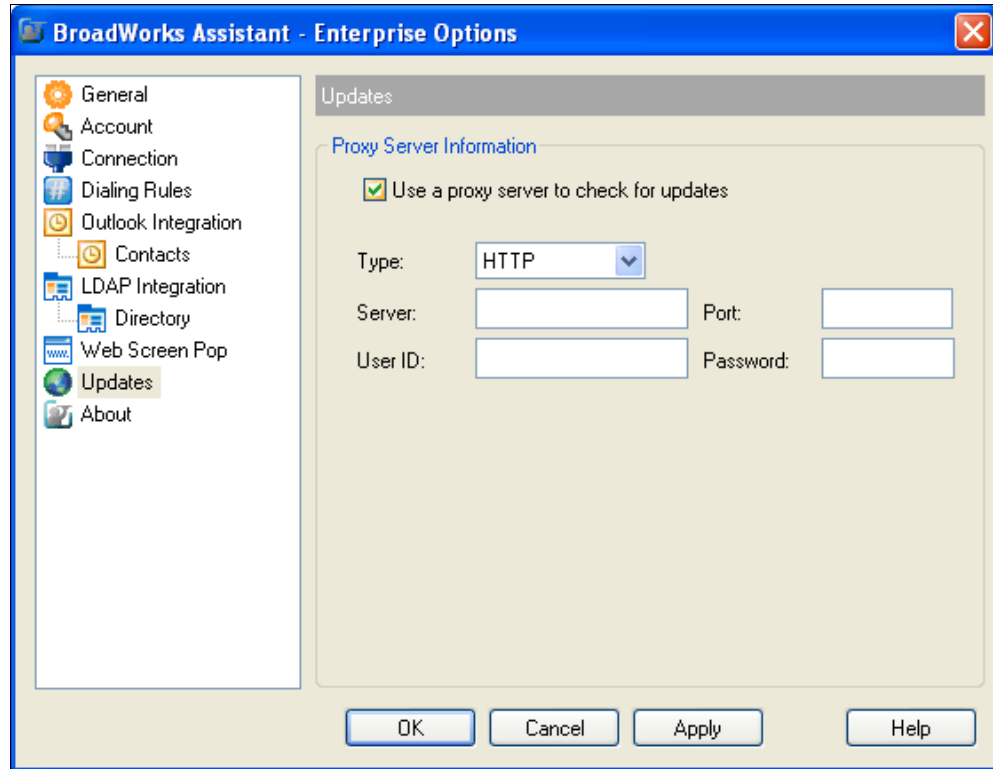


Figure 63 Options Dialog – Update Page

Assistant uses this proxy only when checking for product updates, not when connecting to the BroadWorks server to provide Call Management features.

Contact your service provider or system administrator if you do not know the appropriate settings.

Use a proxy server to check for updates specifies whether a proxy server is required for Assistant to access the internet. When this box is checked, the other settings on this page become enabled.

- *Type* specifies the connection protocol used by the proxy server. The valid option is HTTP.
- *Server* specifies the URL of the proxy server.
- *Port* specifies the port number used by the proxy server. The default port of the HTTP protocol is 80.
- *User ID* specifies a user ID authorized to use the proxy.
- *Password* corresponds with the user ID mentioned above.

3.7 LDAP Integration

The *LDAP Integration* page allows you to configure the settings Assistant uses to connect to the LDAP directory server.

NOTE: Make sure you have correctly installed a valid certificate in both the Current User and Local Machine Window certificate stores before attempting to connect with SSL option.

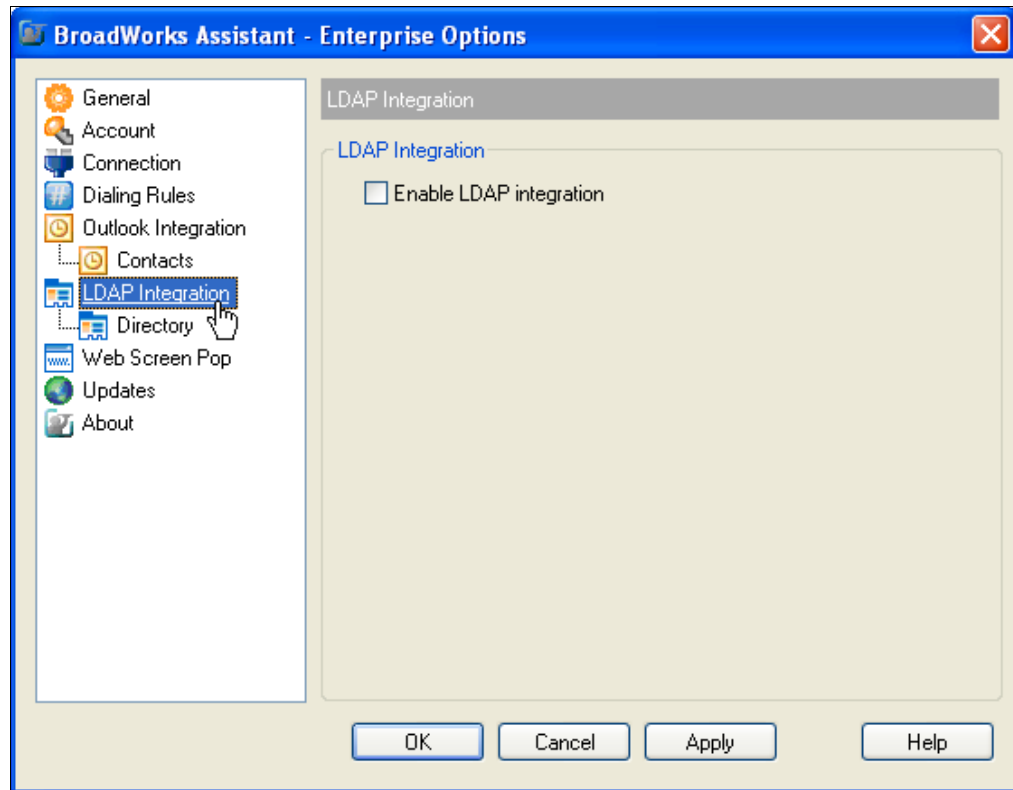


Figure 64 Options Dialog – LDAP Integration Page

Contact your service provider or system administrator if you do not know the appropriate settings.

Enable LDAP Integration determines whether Assistant provides LDAP directory lookup services. Checking this box enables the controls on the *Directory* page.

3.7.1 Directory

The *Directory* page allows you to provide the configuration settings required for Assistant to connect to your directory server.

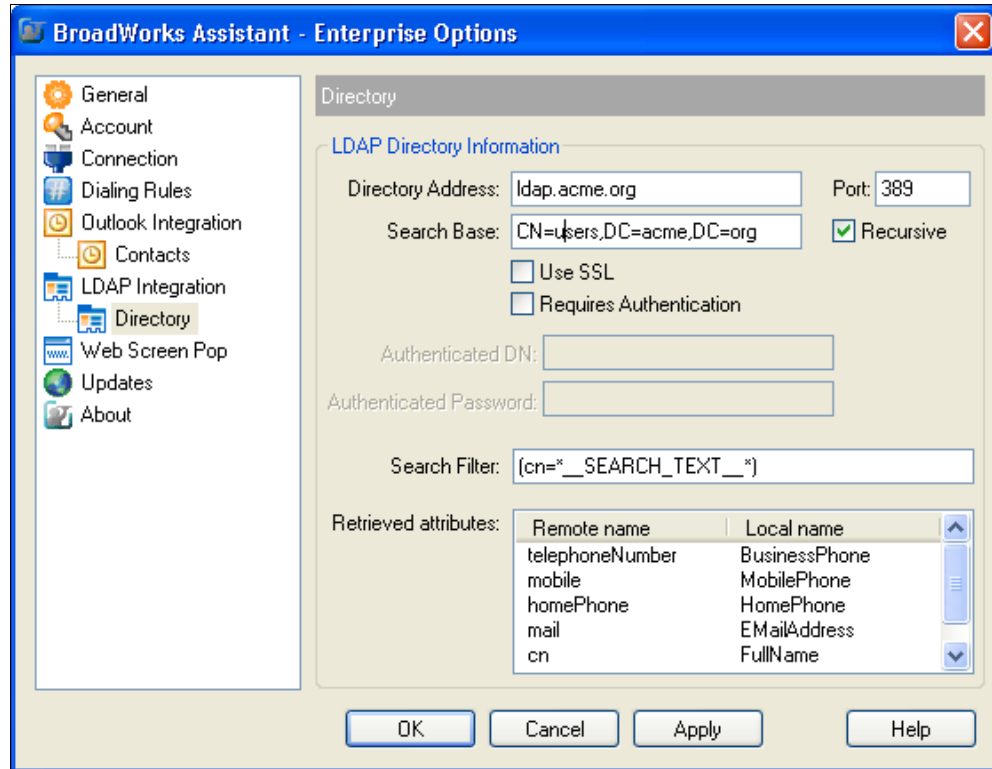


Figure 65 Options Dialog – LDAP Integration – Directory Page

Once you successfully log in, the controls on this page become inactive.

- *Directory Address* specifies the network address of the LDAP directory server.
- *Port* the port number for the LDAP server. This is compulsory and can be obtained from the service provider.
- *Search Base* determines the location in the directory server tree that Assistant looks in when executing a search.
- The *Recursive* check box, when checked, searches all sub-trees within the search base until the specifications are found.
- *Use SSL* (Secure Sockets Layer) determines whether Assistant uses SSL to connect to the directory server. Note that enabling SSL may require the use of a different port.
- *Requires Authentication* indicates whether Assistant must provide a user name and password to the directory server to conduct searches.
- *Authenticated DN* is the user name Assistant uses when connecting to the directory server when *Requires Authentication* is checked.
- *Authenticated Password* corresponds to the *Authentication DN*.
- *Search Filter* specifies an additional search filter to apply to all directory searches. For example, to include the search criteria in the filter you must include

(cn=__SEARCH_TEXT__*). Alternatively in another example, "(telephoneNumber=*)" restricts search results to users who have a telephone number assigned.

- *Retrieved attributes* is a table that controls the way that Assistant maps attributes returned from the directory server to columns displayed in the list of search results.

In each row of the table, enter an *LDAP* attribute in the *Remote Name* column. In the *Local Name* column, enter a corresponding local attribute. Possible values are: "FullName", "BusinessPhone", "ExtensionNumber", "MobilePhone", "HomePhone", and "EMailAddress".

3.8 Web Screen Pop

The *Web Screen Pop* page allows you to configure a web page that you can open from the call notification window.

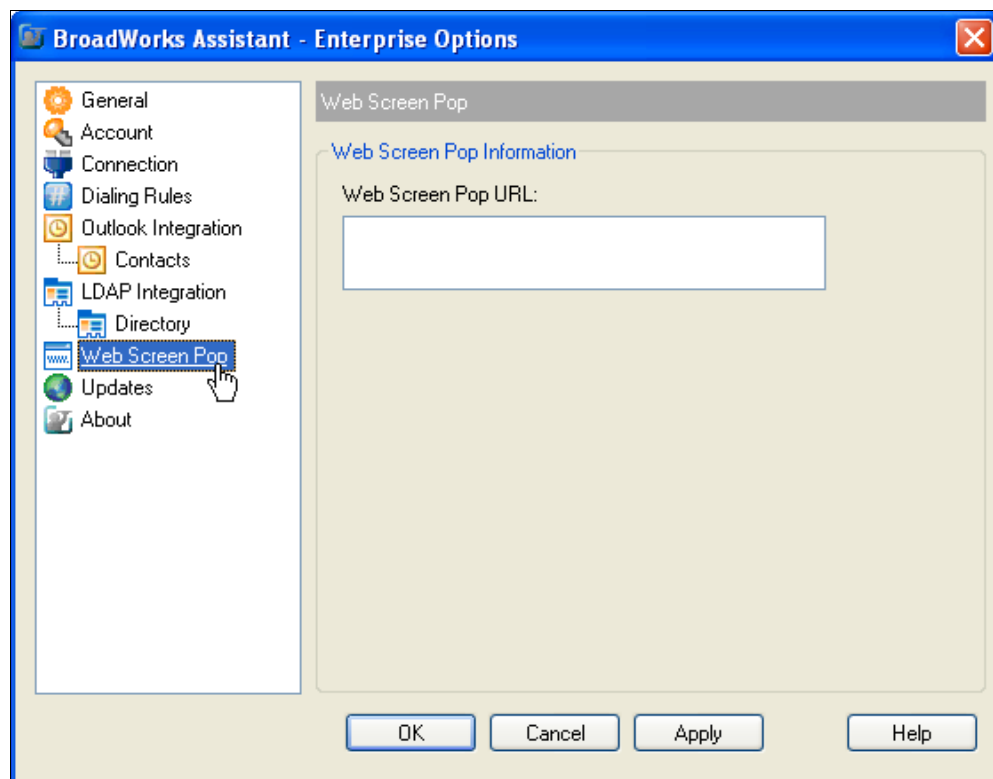


Figure 66 Options Dialog – Web Screen Pop Page

The *Web Screen Pop URL* determines the URL that Assistant opens when you click **Web Screen Pop** in the notification window. In addition to the URL, there are a number of optional parameters that the client can pass to the browser. The following list summarizes these parameters:

- **__USER__**: The user's BroadWorks ID. (Note that in this case the "user" is the BroadWorks subscriber.)
- **__FIRST__**: The first name of the user.
- **__LAST__**: The last name of the user.
- **__EMAIL__**: The e-mail address of the user.

- **__GROUP__**: The name of the BroadWorks group the user belongs to.
- **__SERVICE_PROVIDER__**: The name of the BroadWorks service provider the user belongs to.
- **__PHONE__**: The phone number of the user.
- **__REMOTE_PHONE__**: The phone number of the remote party.
- **__REMOTE_NAME__**: The name of the remote party (when available).
- **__CALL_TYPE__**: “Incoming” or “Outgoing”.

3.9 About

The *About* page displays the version, copyright notices, and product disclaimers associated with Assistant. It can be useful when providing information to support representatives for your service provider.

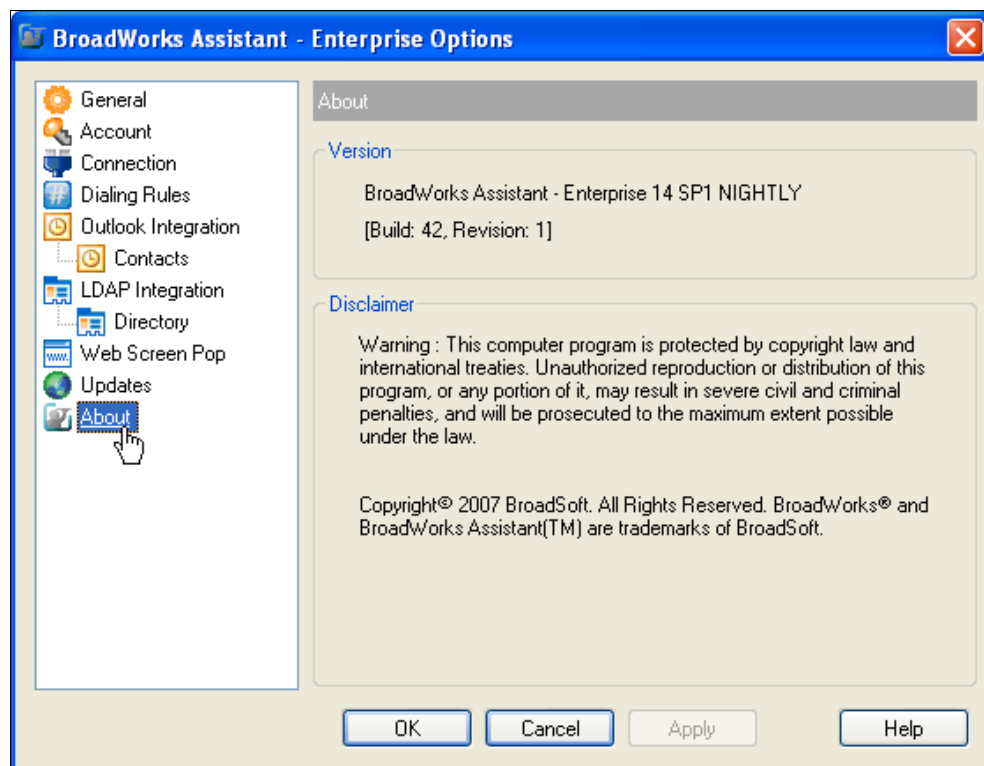


Figure 67 Options Dialog – About Page

4 Services Dialog

The *Services* dialog allows you to configure the calling features provided by Assistant, such as Voice Messaging, CommPilot Express profiles, Call Forwarding, and Call Waiting. The left hand side of the dialog contains a tree view listing the configuration pages you can access. The configuration pages you select in the tree view are displayed on the right.

- Click **OK** to save all changes and close the dialog.
- Click **Apply** to save all changes without closing the dialog.
- Click **Cancel** to close the dialog without saving your changes.

4.1 Incoming Calls

The *Incoming Calls* pages in the *Options* dialog configure the services that apply to calls that you receive.

4.1.1 Anonymous Call Rejection

The Anonymous Call Rejection service blocks all incoming calls from people who have restricted their phone numbers from being shown to their call recipients.

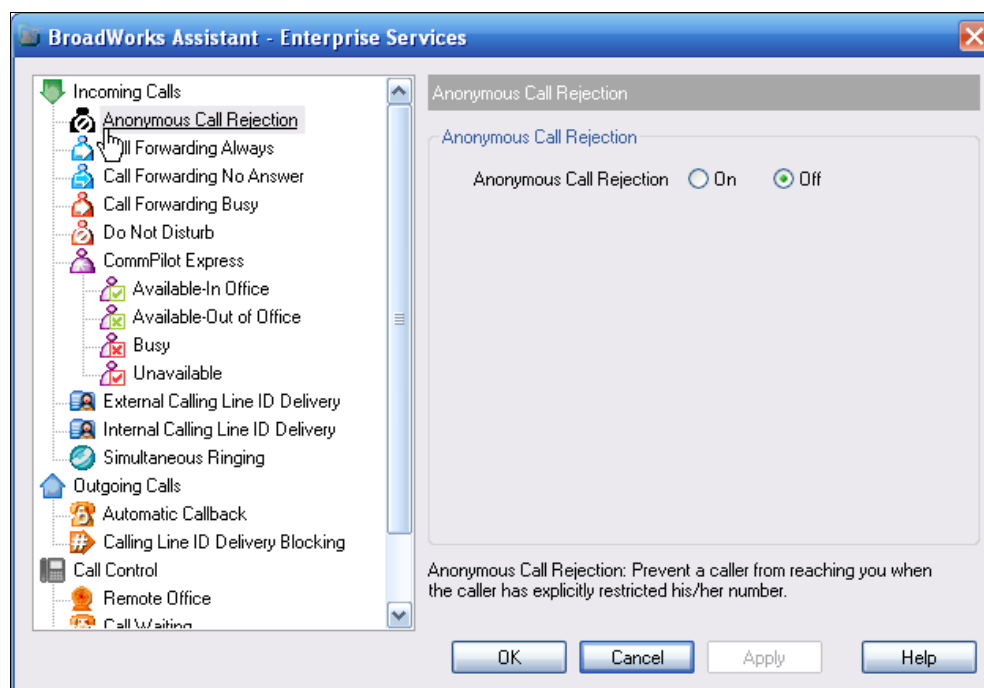


Figure 68 Services Dialog – Anonymous Call Rejection Page

4.1.2 Call Forwarding Always

The Call Forwarding Always service forwards all incoming calls to a specified phone number.

To activate this service, click **Call Forwarding Always** on the toolbar. This highlights the button.

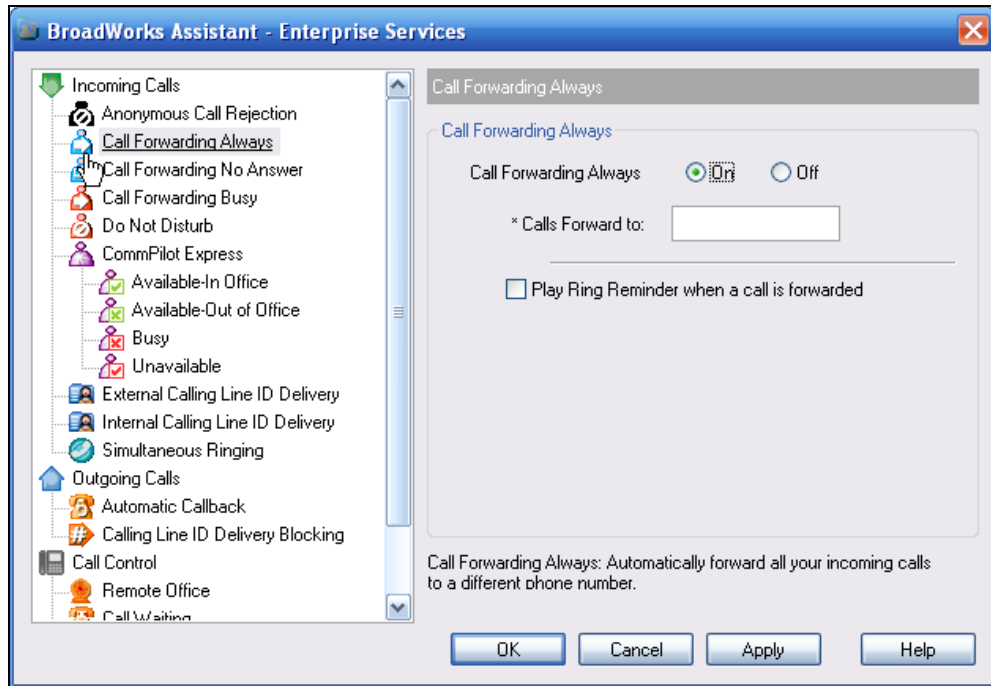


Figure 69 Services Dialog – Call Forwarding Always Page

4.1.3 Call Forwarding No Answer

The Call Forwarding No Answer service forwards all incoming calls to a specified phone number if you do not answer within a specified number of rings.

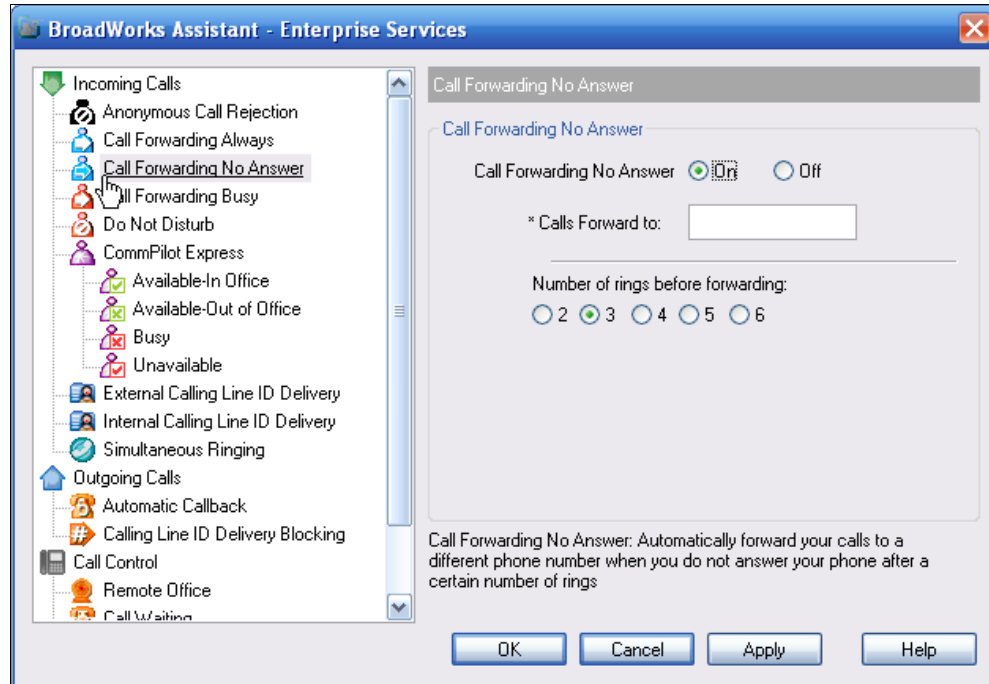


Figure 70 Services Dialog – Call Forwarding No Answer Page

To activate this service, click **Call Forwarding No Answer** on the toolbar. This is highlighted when turned on.

Calls Forward to specifies the phone number to which Assistant redirects all calls forwarded using this service.

Numbers of rings before forwarding is the number of times your phone must ring before Assistant forwards an incoming call.

4.1.4 Call Forwarding Busy

The Call Forwarding Busy service forwards all incoming calls to a specified phone number when all available lines are in use.

To activate this service, click **Call Forwarding** on the toolbar. This button becomes depressed when on.

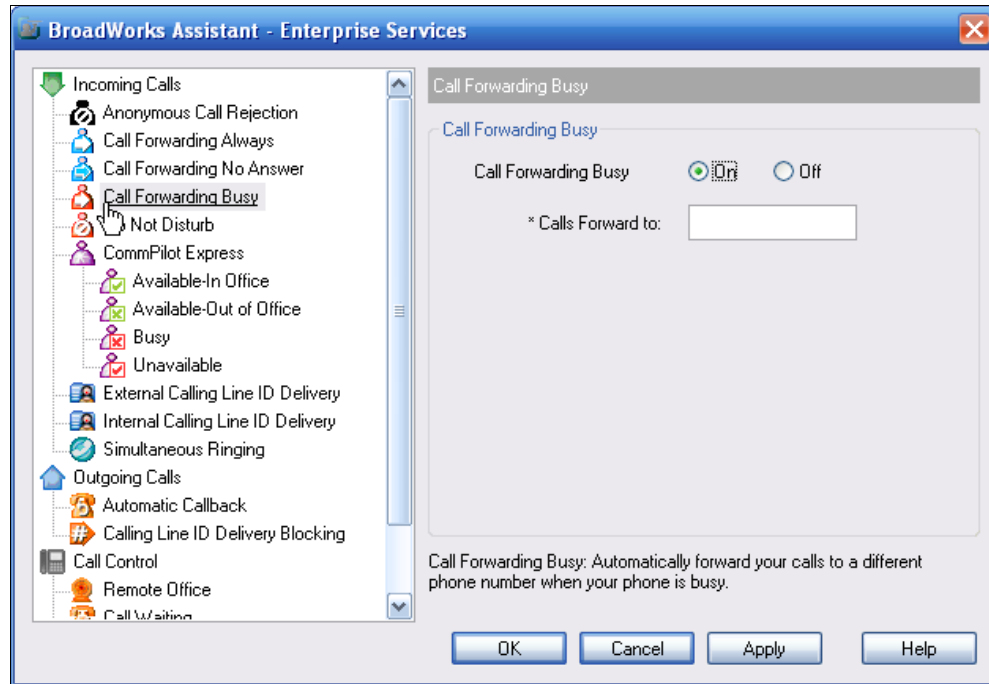


Figure 71 Services Dialog – Call Forwarding Busy Page

4.1.5 Do Not Disturb

The Do Not Disturb service forwards all incoming calls to your Voice Messaging service. If you do not have a Voice Messaging service configured, callers hear a busy tone.

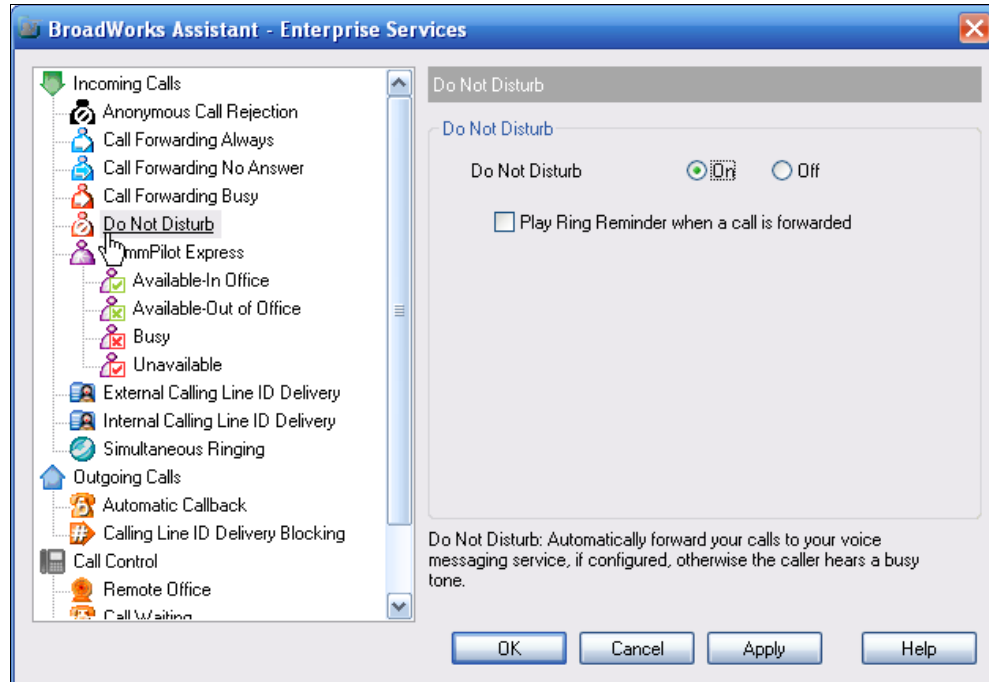


Figure 72 Services Dialog – Do Not Disturb Page

To activate this service, click **Do Not Disturb** on the toolbar. This is highlighted when in service.

Play Ring Reminder when a call is forwarded determines whether Assistant notifies you each time the Do Not Disturb service forwards a call to your Voice Messaging service.

4.1.6 External Calling Line ID Delivery

The External Calling Line ID Delivery service allows you to view the calling line information for incoming calls from external phone numbers.

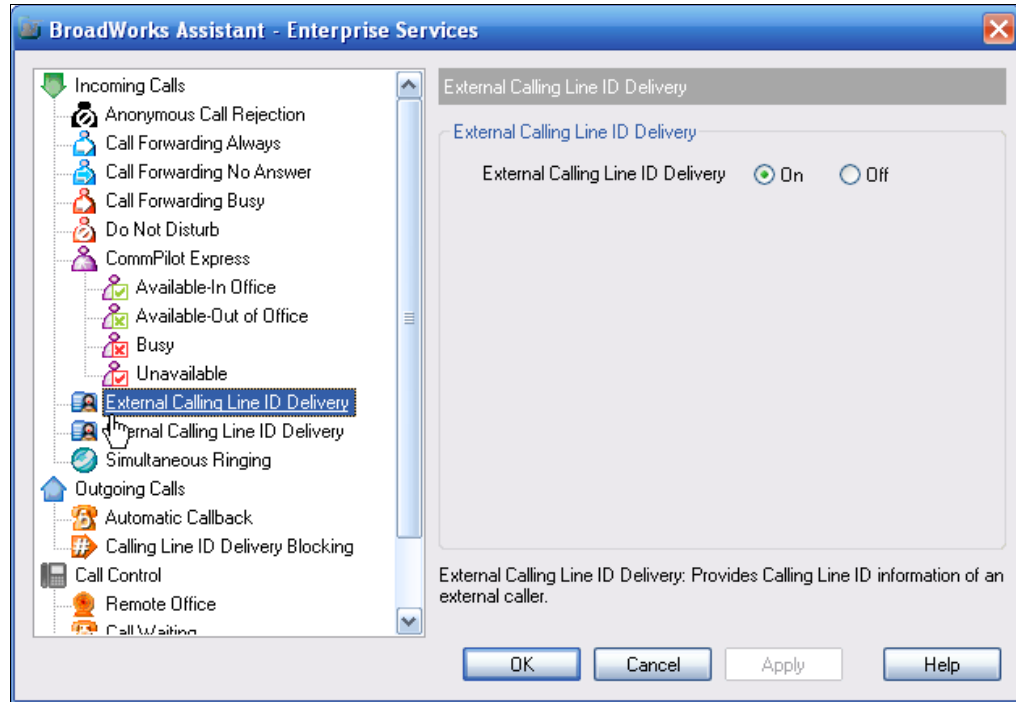


Figure 73 Services Dialog – External Calling Line ID Delivery Page

4.1.7 Internal Calling Line ID Delivery

The Internal Calling Line ID Delivery service allows you to view the calling line information for incoming calls from members of your group.

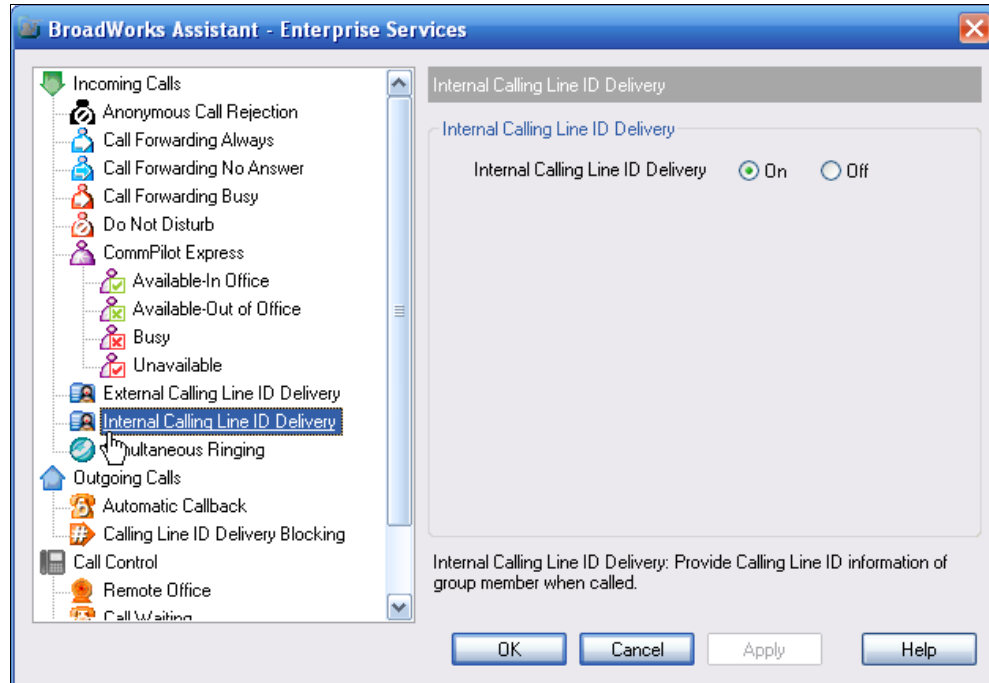


Figure 74 Services Dialog – Internal Calling Line ID Delivery Page

4.1.8 Simultaneous Ringing

The Simultaneous Ringing service rings multiple phone numbers for each incoming call. Any of the phone numbers specified for this service may be used to answer those calls.

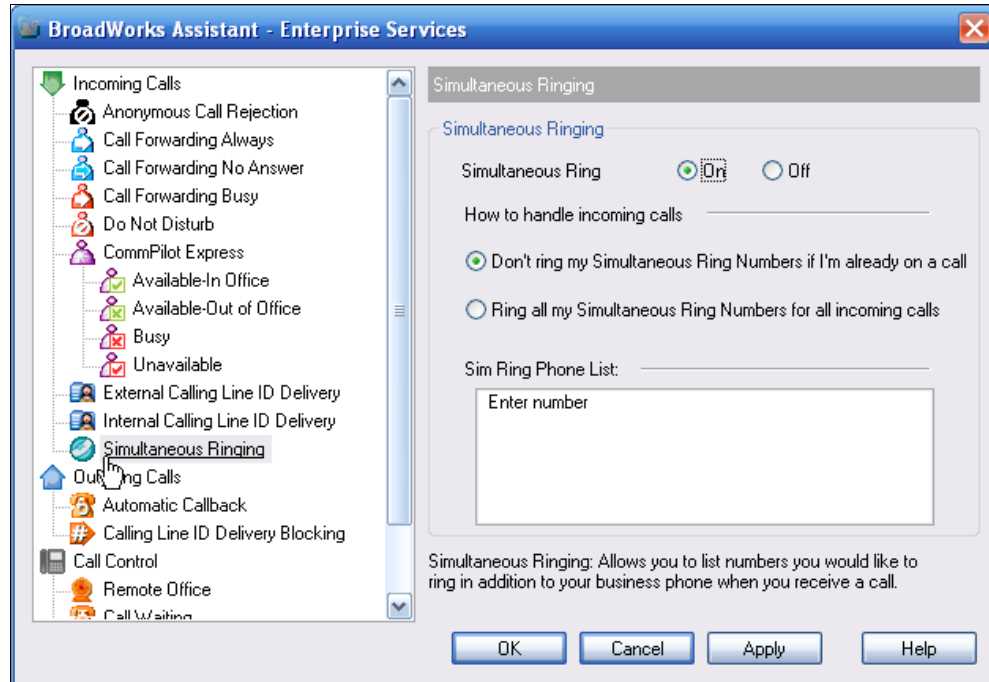


Figure 75 Services Dialog – Simultaneous Ringing Page

To open this page, click **Simultaneous Ringing** on the toolbar. This becomes highlighted when activated.

When the *Don't ring my Simultaneous Ring Numbers if I'm already on a call* option is selected, the Simultaneous Ringing service is temporarily deactivated whenever you are engaged in an active call.

When the *Ring all my Simultaneous Ring Numbers for all incoming calls* option is selected, the Simultaneous Ringing service rings all numbers specified in the list that follows for each incoming call, regardless of whether you currently are engaged in an active call.

Sim Ring Phone List specifies the list of additional phone numbers that ring for each incoming call.

4.1.9 CommPilot Express

NOTE: When using CommPilot Express, you should not enable other services such as Call Notify, Call Forwarding, or Simultaneous Ringing.

CommPilot Express allows you to manage your personal services using four configurable profiles. These profiles control your incoming calls automatically. Even when off-site, you can still manage your active profile on the web or over the phone.

With CommPilot Express, you can manage your calls based on your schedule. This allows you to work efficiently without unnecessary interruption.

- 1) To set the active CommPilot Express profile, select a profile from the *CommPilot* drop-down list on the toolbar.
- 2) To disable all profiles, select *CommPilot – None*.

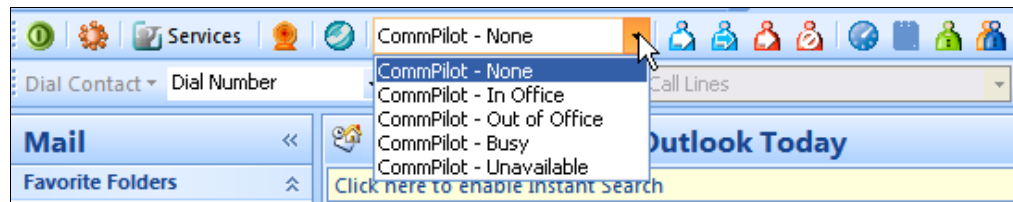


Figure 76 CommPilot Profiles

You can also set the active CommPilot Express profile on the *CommPilot Express* page of the *Services* dialog. The *Services* dialog for Assistant - Enterprise allows you to configure the settings that apply to each of your CommPilot profiles.

4.1.9.1 Available - In Office

The Available – In Office profile determines how incoming calls are handled when you are working at your desk.

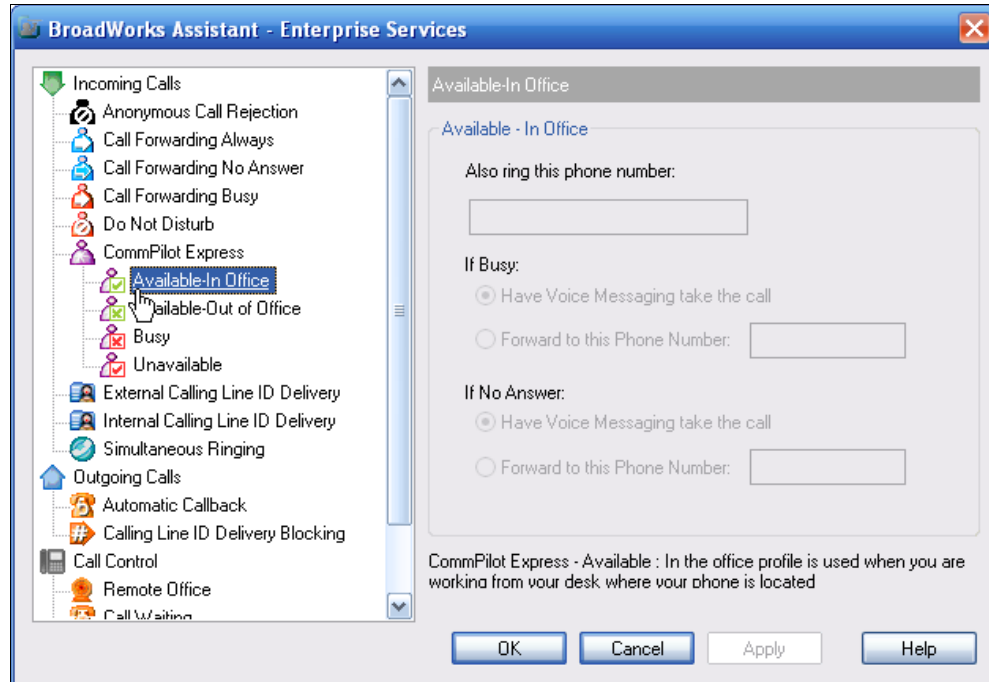


Figure 77 Services Dialog – CommPilot Express: Available – In Office Page

Also ring this phone number specifies an additional number for Assistant to ring for each incoming call. Calls may be answered from either this number or your main number.

If you select:

- *If Busy: Have Voice Messaging take the call*, Assistant forwards all incoming calls to your Voice Messaging service if you have no available open lines.
- *If Busy: Forward to this Phone Number*, then all incoming calls are forwarded to the specified phone number if you have no available lines.
- *If No Answer: Have Voice Messaging take the call*, Assistant forwards all incoming calls to your Voice Messaging service if you do not answer after a set number of rings.
- *No Answer: Forward to this Phone Number*, Assistant forwards all incoming calls to the specified phone number if you do not answer after a set number of rings.

4.1.9.2 Available – Out of Office

The Available – Out of Office profile determines how incoming calls are handled when you are not working at your desk, but are still able to receive calls.

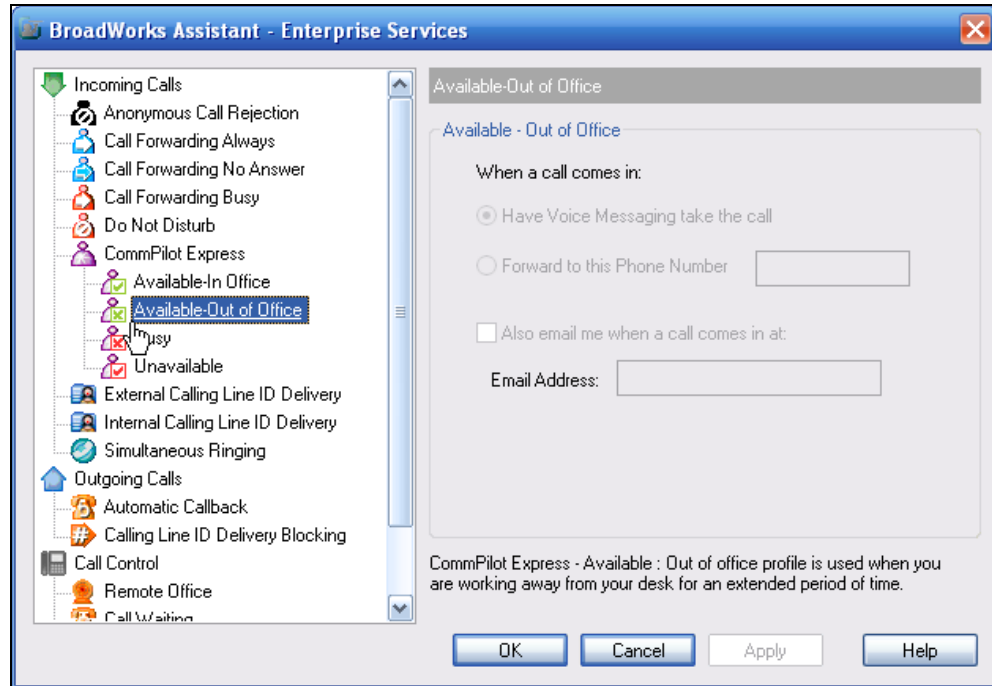


Figure 78 Services Dialog – CommPilot Express: Available – Out of Office

If you select:

- *Have Voice Messaging take the call*, all incoming calls are forwarded to your Voice Messaging service.
- *Forward to this Phone Number*, Assistant forwards all incoming calls to a specified number.

Also e-mail me when a call comes in at determines whether Assistant also sends an e-mail notification to the address you specify below it each time you receive an incoming call.

The *E-mail address* specifies the e-mail address Assistant notifies when you receive an incoming call.

4.1.9.3 Busy

The Busy profile determines how incoming calls are handled when you are busy.

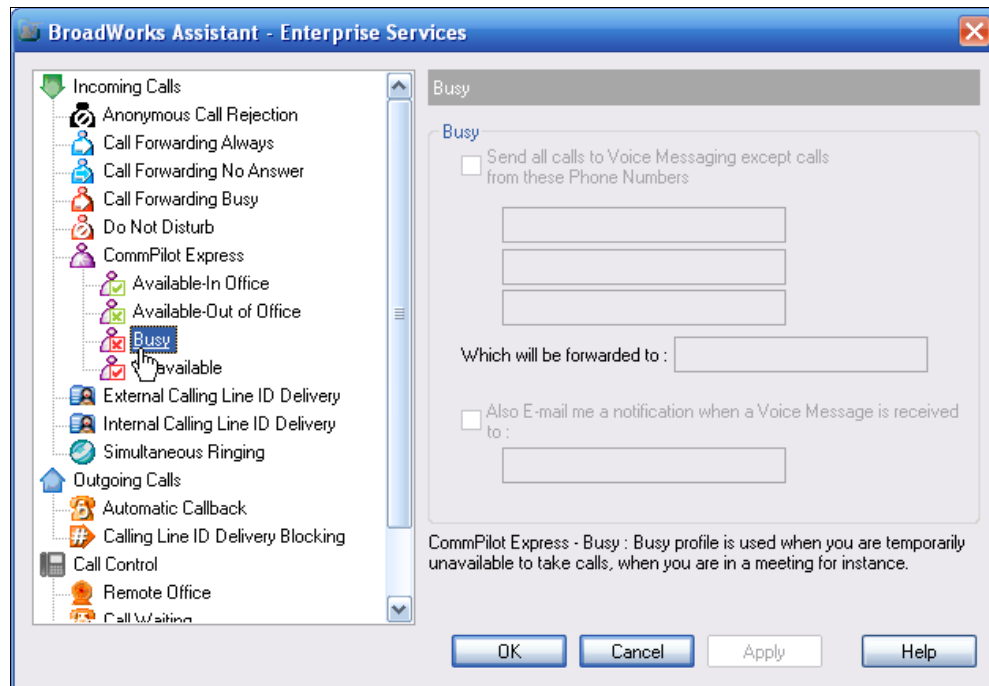


Figure 79 Services Dialog – CommPilot Express: Busy Page

- *Send all calls to Voice Messaging except calls from these Phone Numbers* forwards all incoming calls to your Voice Messaging service, when selected. You can configure up to three numbers to be excluded from this service in the blank fields provided. Calls to these numbers are instead forwarded to the phone number you specify below it.
- *Which will be forwarded to* determines the phone number to which Assistant forwards the excluded callers specified above.
- *Also E-mail me a notification when a Voice Message is received to* should be selected to receive an e-mail notification each time you receive a Voice Mail message.

4.1.9.4 Unavailable

The Unavailable profile determines how incoming calls are handled when you are not free to take calls, such as during outside business hours or when on holidays.

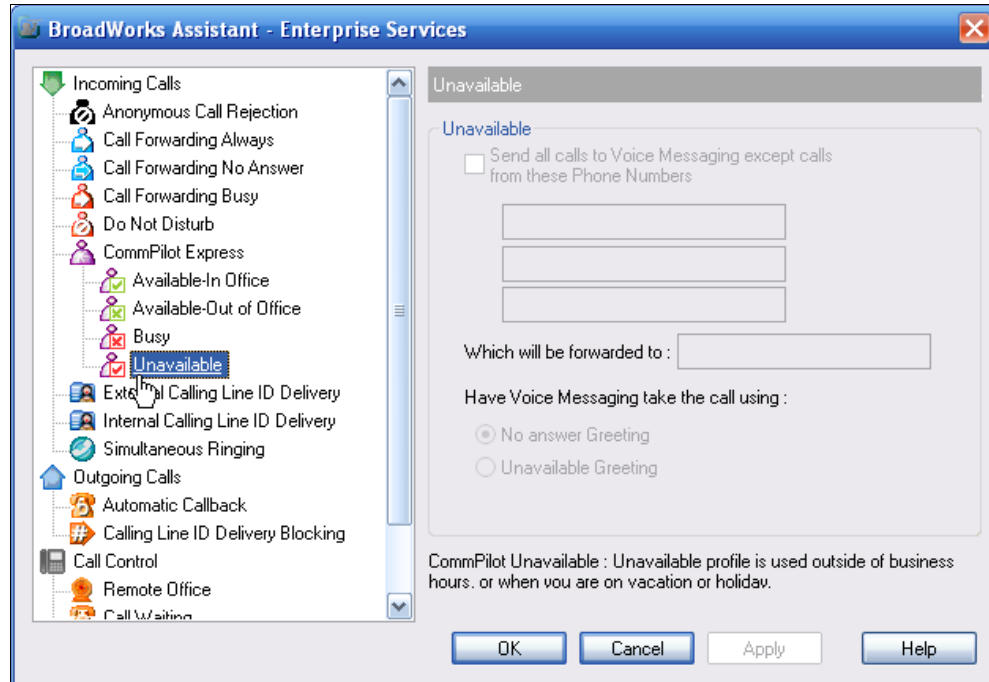


Figure 80 Services Dialog – CommPilot Express: Unavailable Page

If you select:

- *Send all calls to Voice Messaging except calls from these Phone Numbers*, all incoming calls are forwarded to your Voice Messaging service. You can configure up to three numbers to be excluded from this service in the blank fields provided. Calls to these numbers are instead forwarded to the phone number you specify. To determine which phone number Assistant forwards the excluded callers to, select *Which will be forwarded to*.
- *No answer Greeting*, its standard “no answer” greeting message plays to incoming calls.
- *Unavailable Greeting*, your Voice Messaging service is enabled to play its standard “unavailable” greeting message to incoming calls.

4.2 Outgoing Calls

The *Outgoing Calls* pages in the *Options* dialog configure the services that apply to calls that you initiate.

4.2.1 Automatic Callback

The Automatic Callback service allows you to have Assistant monitor a busy party in your group and to automatically establish a call on your behalf when the busy party becomes available.

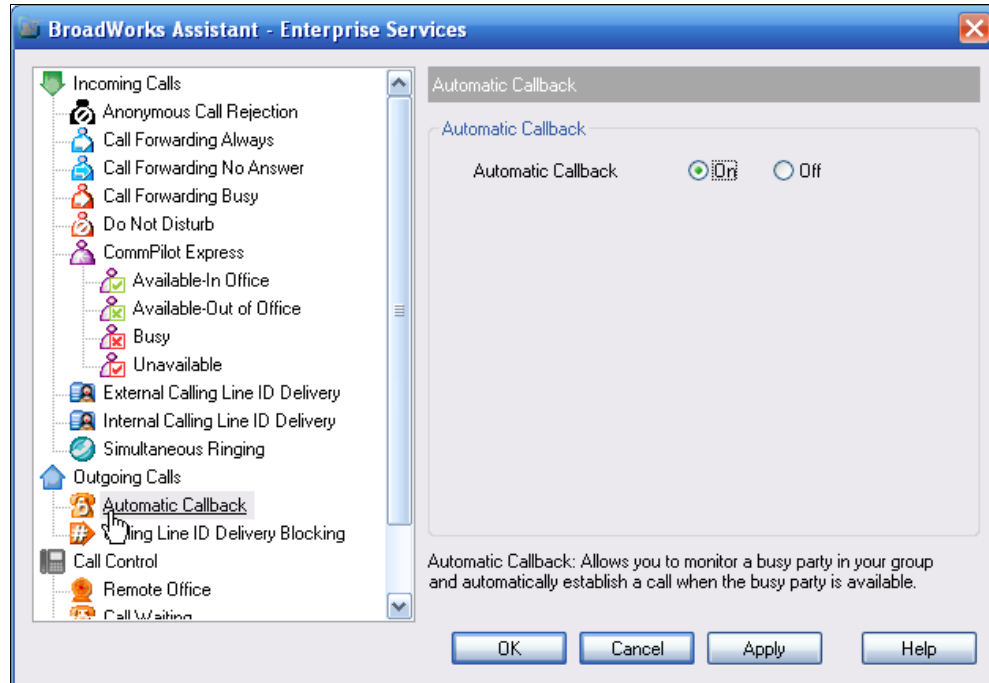


Figure 81 Services Dialog – Automatic Callback

4.2.2 Calling Line ID Delivery Blocking

The Calling Line ID Delivery Blocking service prevents other parties from seeing your phone number or calling line information when engaged in calls with you.

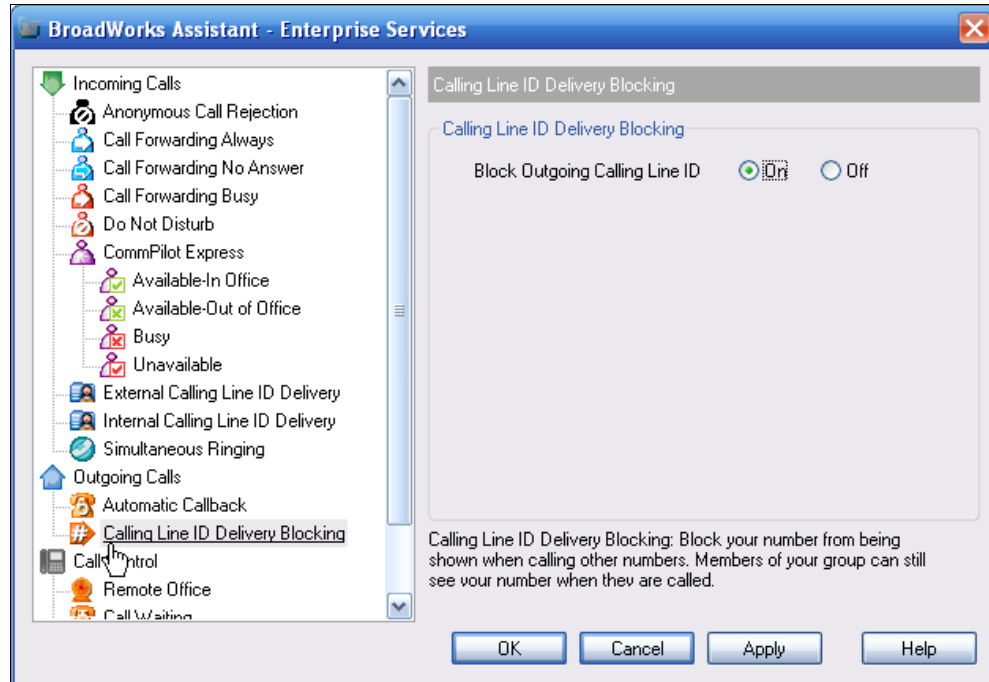


Figure 82 Services Dialog – Outgoing Calls: Calling Line ID Delivery Blocking

4.3 Call Control

The *Call Control* pages in the *Options* dialog allow you to configure your Call Control services.

4.3.1 Remote Office

The Remote Office service allows you to substitute a different phone number for your office phone number. You can open this page by clicking Remote Office on the toolbar. The button is highlighted when turned on.

Remote Office Number specifies the alternate phone number to substitute for your office number.

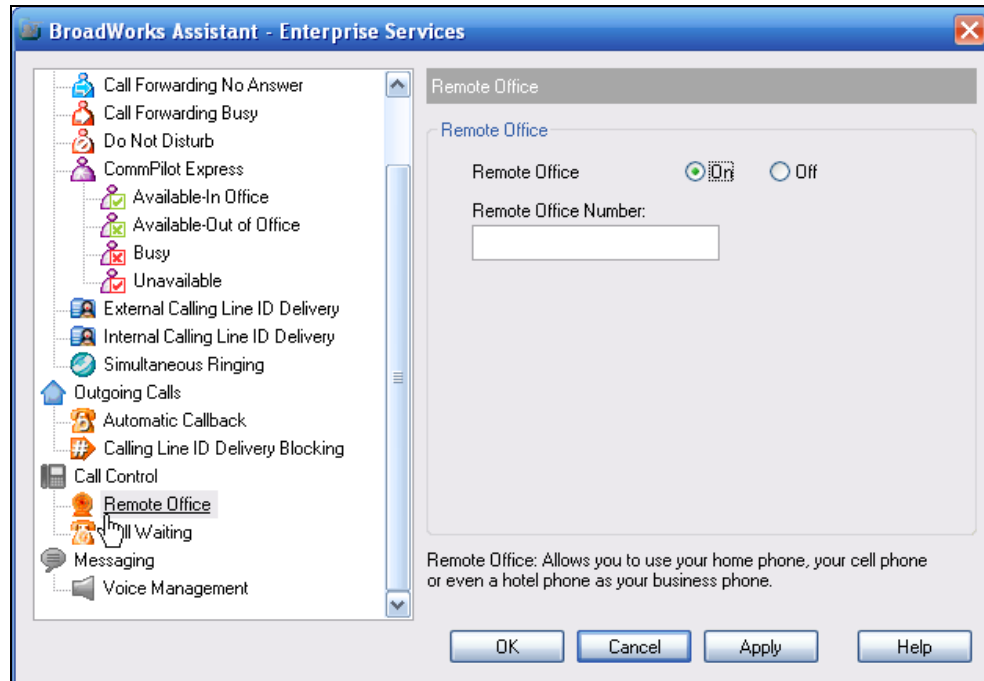


Figure 83 Services Dialog – Call Control: Remote Office

4.3.2 Call Waiting

The Call Waiting service allows you to answer incoming calls while engaged in another active call.

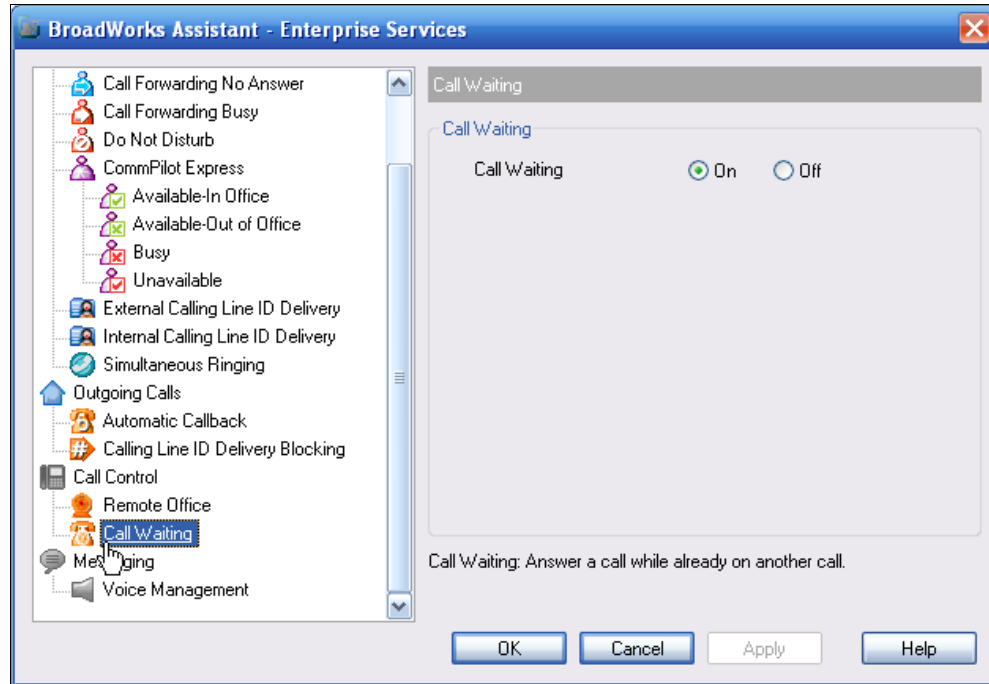


Figure 84 Services Dialog – Call Control: Call Waiting

4.4 Messaging

The *Messaging* pages in the *Options* dialog allow you to configure your Voice Management settings.

4.4.1 Voice Management

The *Voice Management* page specifies how the system handles your voice messages.

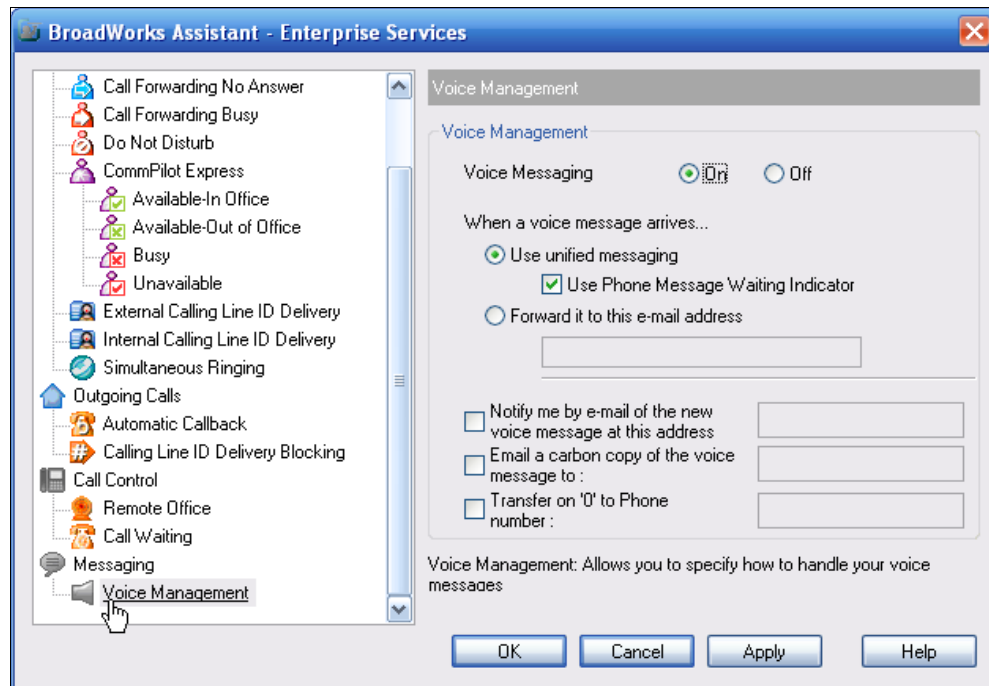


Figure 85 Services Dialog – Messaging: Voice Management

When the *Use unified messaging* option is selected, you can access your voice messages via e-mail and phone. Messages are sent as mail attachments to the e-mail address configured for your account.

“*Use Phone Message Waiting Indicator*” determines whether your phone provides an alternate dial tone and a visual indicator on some phone models to indicate that you have a message waiting.

If the “*Forward it to this e-mail address*” option is selected you will be able to access your voice messages only by e-mail. Messages are sent as mail attachments to the specified e-mail address, and are not available for retrieval by phone.

“*Notify me by e-mail of the new voice message at this address*” determines whether the system sends a notification e-mail to the specified address each time it records a voice mail. This notification will contain the date and time the voice message was recorded, but does not contain the content of the voice message itself as an attachment.

5 Troubleshooting

This section contains information that may aid those having difficulty using Assistant. If your problem is not listed in the index, contact your service provider for assistance.

5.1 Using Assistant with Microsoft Windows Service Pack 2 (SP2)

When you open the Group Directory or Personal Directory from the toolbar, Internet Explorer or Firefox may display the following warning message:

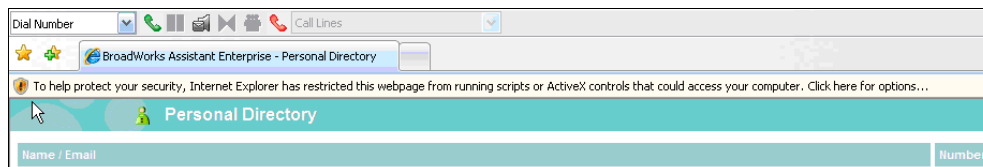


Figure 86 Internet Explorer Warning

This warning is triggered by the JavaScript used by Assistant to sort directory listings.

The following instructions override the warning and open the directory:

- 1) Click the message.
The notification turns blue and displays a pop-up menu.
- 2) Select *Allow Blocked Content* from the pop-up menu.

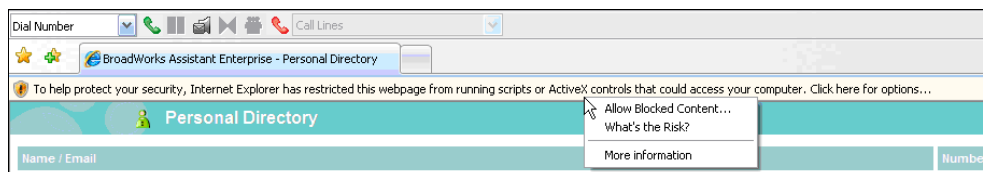


Figure 87 Internet Explorer Warning

Another security warning appears.

- 3) Click **Yes**.

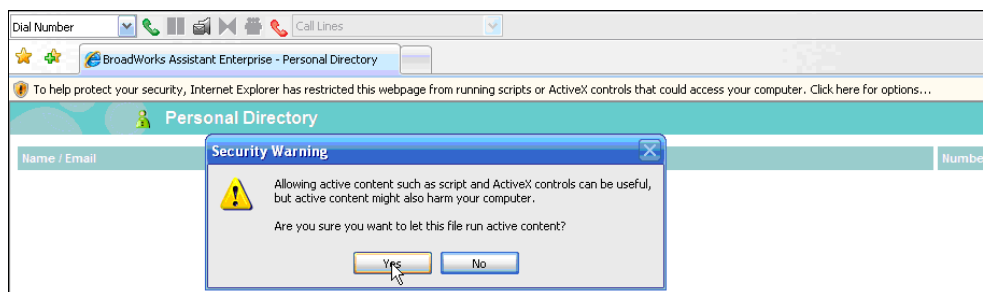


Figure 88 Internet Explorer Security Warning

5.2 Assistant is Not Visible in Outlook

If the Assistant toolbar is not visible in Outlook, follow these steps. If the problem is not solved, contact your service provider.

To confirm that Assistant - Enterprise is installed:

- 1) Open Internet Explorer.
- 2) Click the Options icon in the Assistant toolbar.
- 3) Click **General** in the tree view on the left of the *Options* dialog.
- 4) Verify that the “version” area of the page lists *BroadWorks Assistant – Enterprise*. If it lists only *BroadWorks Assistant*, contact your service provider to upgrade to Assistant - Enterprise. If it lists *BroadWorks Assistant – Enterprise* follow the next step.

Make the Assistant - Enterprise Toolbar visible:

- 1) Right-click an empty area of the toolbar region in Outlook.
A menu appears listing all the toolbars currently registered.
- 2) Make sure that the Assistant entries (*Telephony Toolbar Call Control* and *Telephony Toolbar Services*) are checked, as shown in *Figure 89 Outlook Toolbar Options*.

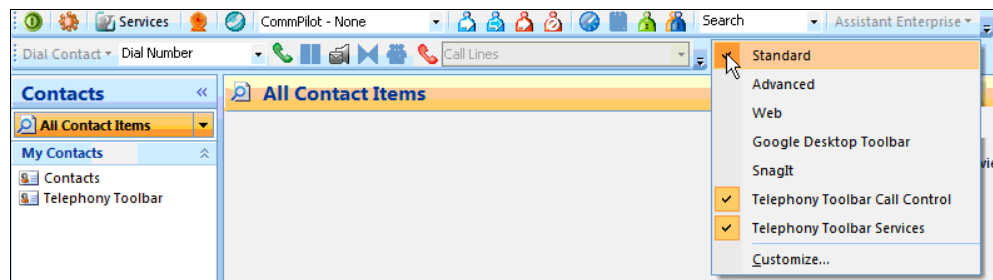


Figure 89 Outlook Toolbar Options

If the Assistant entries are not listed, continue with the next step.

5.3 Register Assistant within Outlook

- 1) Click on Help or About Microsoft Office Outlook.

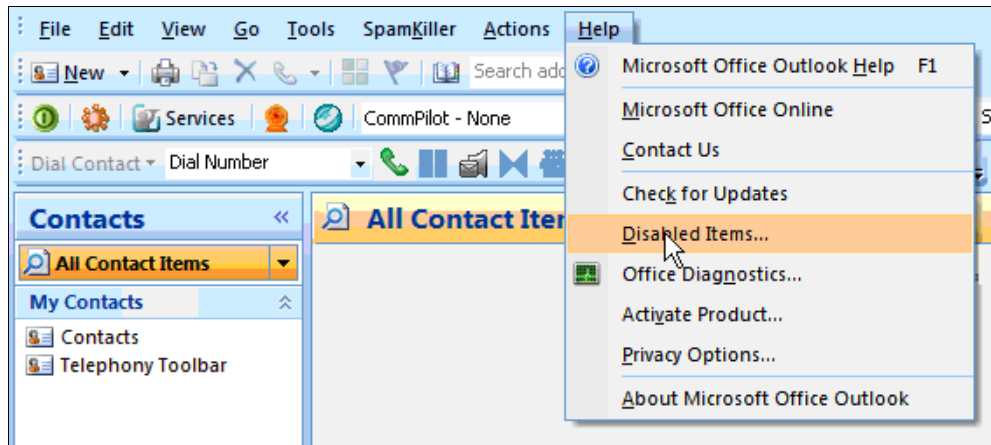


Figure 90 Help Dialog, Disabled Items

- 2) In the dialog box select *Disabled Items*. If the *Telephony Toolbar* is visible on the list, click **Enable** and restart Outlook.

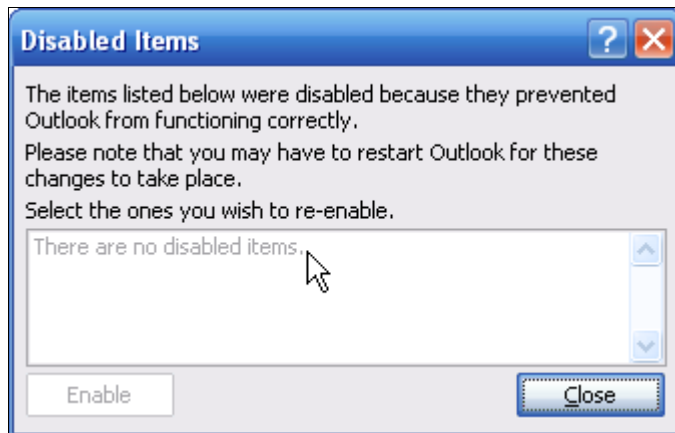


Figure 91 Disabled Items Dialog

5.4 I Have Not Been Licensed to use Assistant

This error indicates that your service provider has not added the Assistant Client License to your list of services.

Contact your service provider to activate Assistant for your account.

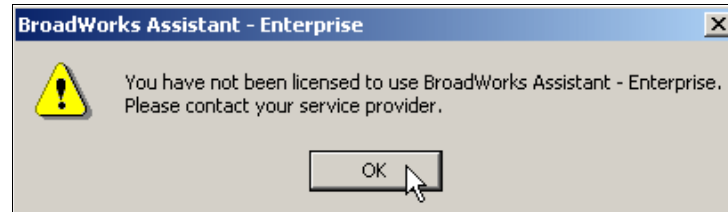


Figure 92 License Notification

5.5 Assistant is Not Visible in Internet Explorer

If the Assistant toolbar is not visible in Microsoft Internet Explorer, follow these steps:

- 1) Right-click an empty area of the toolbar region in Explorer.
A menu appears listing all the toolbars currently registered.
- 2) Make sure that the Assistant entries (*Telephony Toolbar Call Control*, *Telephony Toolbar Services for Assistant – Enterprise*, and *Telephony Toolbar for Assistant*) are checked, shown in *Figure 93 Internet Explorer Toolbar Options*.

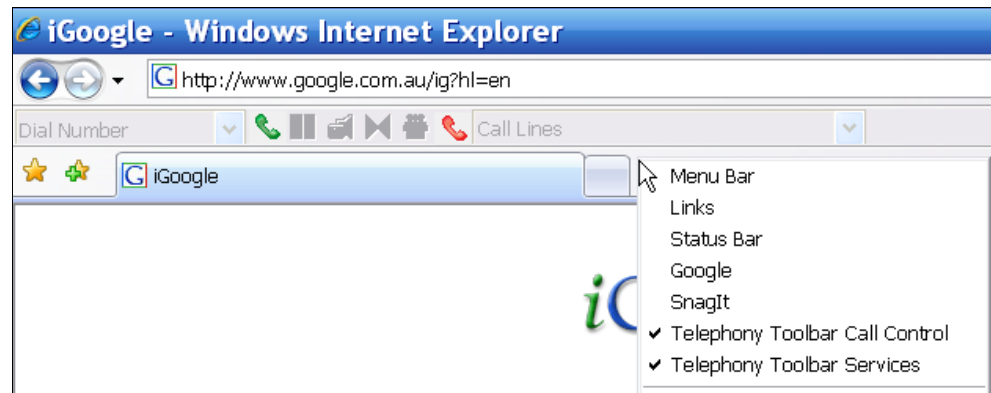


Figure 93 Internet Explorer Toolbar Options

If your problem is still not solved, contact your service provider.

Index

- About, 42
- About this guide, 8
- Anonymous Call Rejection, 43
- Answer button, 19
- Answering calls, 27
- Assistant
 - Buttons, 15
 - Toolbar, 14
 - Using, 14
- Assistant - Enterprise drop-down list, 17
- Automatic Callback, 56
- Available-In Office, 52
- Available-Out of Office, 53
- Blind transfer, 27
- Blind Transfer button, 19
- Busy, 54
- Buttons, Assistant, 15
- Call Control, 57
 - Call Waiting, 59
 - Remote Office, 58
- Call Forwarding Always, 44
- Call Forwarding Always button, 16
- Call Forwarding Busy, 46
- Call Forwarding Busy Service button, 16
- Call Forwarding No Answer, 45
- Call Forwarding No Answer Service button, 16
- Call History button, 17
- Call history, dialing from, 24
- Call Lines button, 19
- Call Waiting, 59
- Call, making, 20
- Calling Line ID Delivery Blocking, 57
- Calls
 - Answering, 27
 - Ending, 30
 - Holding, 29
 - Receiving, 27
- CommPilot Express, 51
 - Available-In Office, 52
 - Available-Out of Office, 53
 - Busy, 54
 - Unavailable, 55
- Conference Call button, 19
- Conference, initiating N-Way, 30
- Conference, initiating Three-Way, 29
- Contact list, dialing from, 22
- Contacts, Outlook Integration, 37
- Current CommPilot Profile button, 16
- Dial Contact button, 18
- Dial Number button, 19
- Dialing
 - From call history, 24
 - From contact list, 22
 - From e-mail, 21
 - From group directory, 24
 - From personal directory, 23
 - From search, 25
 - From speed dial directory, 25
 - From vCard, 22
 - From web page, 20
 - New number, 20
 - Previously dialed number, 20
- Dialing number, 20
- Dialing Rules, 35
- Do Not Disturb, 47
- Do Not Disturb Service button, 16
- E-mail, dialing from, 21
- End Call button, 19
- Ending calls, 30
- External Calling Line ID Delivery, 48
- First time login, 9
- Group Directory button, 17
- Group directory, dialing from, 24
- Hold button, 19
- Holding call, 29
- Incoming Calls
 - Anonymous Call Rejection, 43
 - Call Forwarding Always, 44
 - Call Forwarding Busy, 46
 - Call Forwarding Now Answer, 45
 - CommPilot Express, 51
 - Do Not Disturb, 47
 - External Calling Line ID Delivery, 48
 - Internal Calling Line ID Delivery, 49
 - Simultaneous Ringing, 50
- Initiating N-Way Conference, 30
- Initiating Three-Way Conference, 29
- Internal Calling Line ID Delivery, 49
- LDAP Integration, 39
- LDAP Integration, Directory, 40
- Login button, 15
- Login, first time, 9
- Login, subsequent, 13
- Making calls, 20
- Messaging, 59
 - Voice Management, 60
- New number, dialing, 20
- N-Way conference, initiating, 30
- Open BroadWorks Assistant, 8
- Open BroadWorks Assistant - Enterprise, 8
- Opening URL, 28
- Options
 - About, 42
 - Account page, 33
 - Call Control, 57
 - Connection page, 34
 - Dialing Rules, 35

- General page, 32
- LDAP Integration page, 39
- Messaging, 59
- Outlook Integration, 36
- Updates page, 38
- Web Screen Pop page, 41
- Options button, 15
- Options dialog, 32
- Outgoing calls
 - Automatic Callback, 56
 - Calling Line ID Delivery Blocking, 57
- Outlook Integration, 36
- Outlook Integration, contacts, 37
- Personal Directory button, 17
- Personal directory, dialing from, 23
- Previously dialed number, dialing, 20
- Receiving calls, 27
- Remote Office, 58
- Remote Office button, 15
- Retrieving Voice Mail, 31
- Saving vCard, 29
- Search button, 17
- Search, dialing from, 25
- Services
 - Anonymous Call Rejection, 43
 - Automatic Callback, 56
 - Call Forwarding Always, 44
 - Call Forwarding Busy, 46
 - Call Forwarding No Answer, 45
 - Call Waiting, 59
 - Calling Line ID Delivery Blocking, 57
 - CommPilot Express, 51
 - Do Not Disturb, 47
 - External Calling Line ID Delivery, 48
 - Incoming Calls, 43
 - Internal Calling Line ID Delivery, 49
 - Remote Office, 58
 - Simultaneous Ringing, 50
 - Services button, 15
 - Simultaneous Ringing, 50
 - Simultaneous Ringing button, 15
 - Speed Dial Directory button, 17
 - Speed dial directory, dialing from, 25
 - Subsequent login, 13
 - Supervised transfer, 28
 - Three-Way conference, initiating, 29
 - Toolbar, Assistant, 14
 - Transfer to Voice Mail button, 19
 - Transfer, blind, 27
 - Transfer, supervised, 28
 - Transferring, to Voice Mail, 30
 - Troubleshooting, 61
 - Assistant not visible in Internet Explorer, 64
 - Assistant not visible in Outlook, 62
 - Assistant with Windows Service Pack 2, 61
 - Not licensed to use Assistant, 64
 - Registering Assistant within Outlook, 63
 - Unavailable, 55
 - Updates page, 38
 - URL, opening, 28
 - Using Assistant, 14
 - vCard
 - Dialing from in Outlook 2000/2002/2003, 22
 - Dialing from in Outlook 2007, 23
 - Saving, 29
 - Voice Mail
 - Retrieving, 31
 - Transferring to, 30
 - Voice Management, 60
 - Web page, dialing from, 20
 - Web Screen Pop, 41